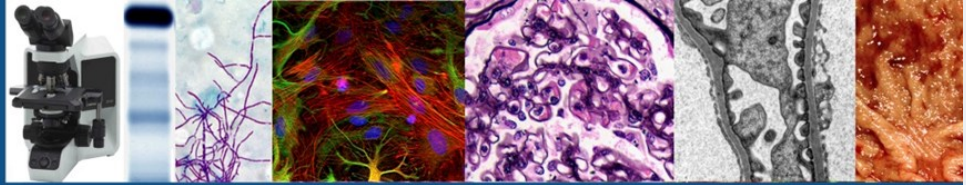


THE PATH WAY

March 2015

Volume 6, Issue 1



DEPARTMENT of PATHOLOGY & LABORATORY MEDICINE



Steven L. Carroll, M.D., Ph.D.

SPRING SYMPOSIA OVERVIEW



IMAGES BY JOSH MORRIS

MUSC MEDICAL UNIVERSITY of SOUTH CAROLINA
DEPARTMENT OF PATHOLOGY & LABORATORY MEDICINE

PATHOLOGY SPRING SYMPOSIA FEBRUARY 24 - 28, 2015

CLINICAL PATHOLOGY
SURGICAL PATHOLOGY - CYTOLOGY
DERMATOPATHOLOGY

mckee-seminar.musc.edu



ONLINE REGISTRATION AVAILABLE

Belmond Charleston Place

Condé Nast Platinum Circle, Travel & Leisure - 500 Best Hotels in World
Set in the heart of downtown Charleston, Belmond Charleston Place is the perfect location to explore the region's colorful history and outstanding natural beauty.

CHARLESTON, SOUTH CAROLINA



Top World Destination, 2012, Best US City, 2013, 2012, 2011 ~ (Condé Nast Traveler)
Top US City, #5 in World, 2014, Top City US & Canada, 2013 ~ (Travel & Leisure)
Friendliest City in US, 2014 (Condé Nast) ~ Most Romantic US City, 2011 (Yahoo)

Inside this issue:

Spring Symposia Overview	1-2
Sandy Nelson Memorial	3
Business Office Announcements	4
You're in the Spotlight	5
Arrivals/Departures	5
Lab Week Dates	5
Hennigar Pathology Museum	6
Faculty Senate	6
Recycle / Earth Day	6-7
Congratulations / Hello	8
Research Division Update	9-10
Faculty Focus—Dr. Ethier	11-12
IT Article	13
Match Day-Incoming	
Residents	14-15
Incoming Fellows	15-17
Upcoming Meetings	18

This newsletter is made possible from the generous contributions of MUSC's Pathology and Laboratory Medicine Faculty and Staff. The success of this publication is dependent upon this support. Thank you for your interest, time and information. For inquiries, suggestions or submission information please contact Lori Roten (roten@muscedu).

*THANK YOU TO ALL WHO WERE INVOLVED
TO MAKE THIS A SUCCESS!!*



The Pathology
Spring Symposia
took place on
February 23-28, 2015.
at the
Charleston Place Hotel.
Once again our Department
hosted a world class
conference with more than
150 attendees and speakers
from around the country.



*WE LOOK
FORWARD
TO SEEING
YOU NEXT
YEAR!!*

SANDY NELSON



Sandy Nelson Excellence in Communication Award (SNECA)

A scholarship fund that was set up by the
Department of Pathology and Laboratory Medicine
to help a Medical Student.

Sandy worked for the Department of Pathology and Laboratory Medicine and later the College of Medicine for over 30 years providing administrative support and innovation to the pathology course, medical and dental students, and the COM2 curriculum (Curriculum Coordinator, Year 2).

She was revered by students for guiding them through 2nd year scheduling, devotion to their concerns, efficiency handling administrative problems, and acting as a student-faculty liaison.

Sandy was dedicated to serving “her” faculty and she considered the medical students her children.

The students’ admiration is endorsed by the numerous awards Sandy received, including the Golden Apple Special Recognition Award at least 8 times (1993, 1999, 2001, 2004, 2007, 2009, 2012, and 2013).

Sandy is fondly remembered for being a dedicated colleague who always exhibited a positive attitude and devotion to others, especially to the medical students.

Sandy was a treasured colleague and friend to many. While we struggle with the loss of such a bright and selfless woman, we realize we were privileged to have known her and to have been so strongly influenced by her contributions to our medical education community.

A **Memorial Service** was held last July for **Sandy Nelson** in St. Luke’s Chapel on the MUSC Campus.

Bench Dedication for Sandy Nelson

Sandy Nelson’s Bench Dedication will take place beside the Waring Historical Library where the bench is located. Sandy’s bench was made by her husband and the picture shows a cup of coffee that her husband put on the bench in memory of her.

Date and time to be announced at a later date.





DEPARTMENT OF
PATHOLOGY
AND
LABORATORY
MEDICINE

NEWS FROM DEPARTMENT ADMINISTRATION & BUSINESS OFFICE

FACULTY EXCELLENCE AWARDS

Erin Presnell, M.D. - Block 4 Winner for COM2

Jerry Squires, M.D., Ph.D. - Block 2 Winner for COM2

Nick Batalis, M.D. - Block 3 Winner for COM2

Each month and block the students of the College of Medicine like to honor the professors, residents, and physicians who they feel have been exceptional and have made an impact on their education.

CONGRATULATIONS!

Dr. Yusheng Zhu

has been elected as the President of the Commission on Accreditation in Clinical Chemistry, an independent non-profit organization that accredits training programs in clinical chemistry at the masters, doctoral, and postdoctoral level.

CONGRATULATIONS!

TO

DR. KATHERINE HUENERBERG

AND

DR. CHRISTOPHER WENZINGER

**THE LEADERS WITH THE
HIGHEST**

(ALMOST PERFECT) SCORES!

(FALL SEMINAR TUTORIAL CLASSES)

2015 SEAPC

SOUTH EASTERN ASSOCIATION OF PATHOLOGY CHAIRS AND ADMINISTRATORS

REGIONAL CONFERENCE

CHARLESTON HARBOR RESORT AND MARINA, OCTOBER 7-9, 2015

HOSTED BY MUSC, DEPARTMENT OF PATHOLOGY AND LABORATORY MEDICINE AND

THE UNIVERSITY OF ALABAMA AT BIRMINGHAM,

DEPARTMENT OF PATHOLOGY AND LABORATORY MEDICINE



Nomination: Thank you for your time and support. Without your assistance, we would have a hard time keeping our research going smoothly.

Other Nominees: Catherine Mary Bridges, Norma Evans, Brent Grimball, Dolly Hope, Jarvis Jenkins, Sonya Jordan, Kenyaria Noble, Tyrish Page, Lori Roten, Joseph Rozier, Trudie Shingledecker, Ashley Wooldridge



Linda McCarson
Administrative Assistant

ARRIVALS / DEPARTURES

ARRIVALS:

- ◆ Qi (Theresa) Wang, Ph.D, Assistant Professor arrived on 12/1/2014
- ◆ LaShardai Conaway arrived on 1/1/15 as a Graduate Assistant in Dr. Lang's Lab
- ◆ Ericka Smith arrived on 1/1/15 as a Graduate Assistant in Dr. Ethier's Lab
- ◆ Christine Litwin, M.D., Professor in Clinical Pathology arrived on 2/1/15
- ◆ Lisa Reeves arrived on 2/9/15 as a Research Specialist II in Dr. Hazen-Martin's Core Lab
- ◆ Liu Zhiqi arrived on 3/16/15 as a Visiting Scholar in Dr. Sha's Lab
- ◆ Geng Wang arrived on 3/30/15 as a Visiting Scholar in Dr. Qi Wang's Lab

DEPARTURES:

- ◆ Xin Liu left Dr. Lang's lab on 3/2/15
- ◆ Haibin Sheng left Dr. Sha's lab on 3/25/15
- ◆ Xian-ren Wang left Dr. Sha's lab on 3/25/15
- ◆ Haishan Long left Dr. Sha's lab on 3/31/15

LAB WEEK
APRIL 19-25, 2015

WATCH FOR EMAILS OF EVENTS HAPPENING THROUGHOUT THE WEEK!

Hennigar Pathology Museum Tours

(Tours are given by Dr. Christine Papadea)

To Visit or Inquire About the Gordon R. Hennigar Pathology Museum Tours Room RS108

Contact: Dr. Evelyn T. Bruner, Dept. of Pathology and Laboratory Medicine
Office: 792-5008 - Pager ID: 1-4423
brunere@musc.edu

MUSC FACULTY SENATE - Senate Officers

Tom Smith, PhD, President, smithtg@musc.edu

Angela Mund, CRNA, DNP, Vice President, mund@musc.edu

Julie Woolworth, PhD, Secretary, woolworj@musc.edu

Senators in our Department:

Dayna Wolff - wolffd@musc.edu - 2013-2015 Senator COM-CS









Dennis Watson - watsondk@musc.edu - 2014-2015 Alternate COM-CS

Lisa Steed - steedll@musc.edu - 2014-2015 Alternate COM-CS



MUSC Recycles



PAPER		All office paper is shredded and recycled: look for containers with green slotted lids or gray locked cabinets near copy machines, printers and mailrooms	Weekly pick up
PLASTICS #1 to #7		All rigid plastics can be recycled: look for tall blue containers with two holes on the lid outside classrooms, in breakrooms and cafeterias	Weekly pick up
ALUMINUM STEEL CANS		All metals can be recycled: look for same blue containers as plastic	Weekly pick up
GLASS		Empty glass bottles can be recycled: look for the same blue containers as plastics	Weekly pick up
BATTERIES			Request a battery collection bin (all types are OK) then call when it is full
CARDBOARD		Flatten boxes so that no one uses them to collect trash: housekeeping will collect them nightly and take them to one of 9 cardboard balers	Nightly pickup
E-WASTE		CD's, floppy disks, cords and plugs, calculators, speakers and other small electronic devices can be recycled: collect in a box and call when full	Call for pickup: Univ 2-4119 MUHA 2-5600
TONER		email recycle@musc.edu for instructions and to be set up with recycling supplies or use e-waste drop off locations	recycle@musc.edu
BOOKS		Collect books in a box and call when its full	Call for pickup: Univ 2-4119 MUHA 2-5600
CFL LIGHT- BULBS		These bulbs contain mercury: request a pick up from your building manager	Call for pickup: Univ 2-4119 MUHA 2-5600

recycle@musc.edu - contact us: 2-4066 - for service requests: call 2-5600/2-4119 - <http://www.musc.edu/gogreen>



11 am to 2 pm in the Horseshoe
www.musc.edu/gogreen • recycle@musc.edu

Earth Day Celebration at MUSC

is an informal and educational event. It will take place on April 15th in the MUSC horseshoe, 171 Ashley Avenue from 11 am to 2 pm. This is the 6th annual event of its kind and is free and open to all MUSC patients, staff, students, faculty and physicians as well as to visitors and interested public.

There will be sustainable food choices to enjoy while gathering information about composting, collecting rain water, saving energy costs, reducing waste, choosing environmentally friendly products and crafts, becoming more sustainable at home and at work and of course recycling more.

Sustainability is about being better stewards of our environment. The goal of this event is to provide an educational opportunity for all those who share a common love for our Low Country and want to lessen their impact on Planet Earth by living in a more sustainable way!

For a complete list of exhibitors (65 at the time of publication of this newsletter) visit www.musc.edu/gogreen Call Caroline 843-792-9745 or email recycle@musc.edu.

CONGRATULATIONS!

TO: Amanda Prechtl and her husband, Eric

*IT'S
A
BOY!*

John Prechtl arrived on February 11, 2015.
6 lbs. 7 oz.

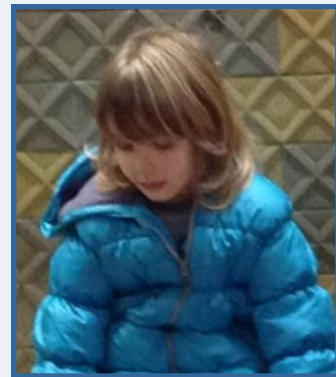
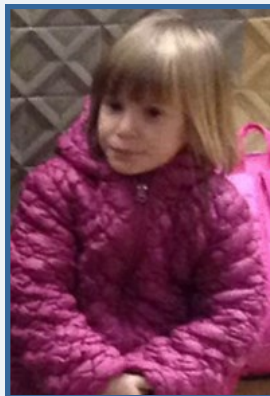


HELLO

Dr. Tihana Rumboldt says hello to everyone in our Department!

She will be visiting the United States in June and will try to stop by.

Pictures below are of her and her children.





RESEARCH DIVISION UPDATE

Statistics for the Division of Research from July through September.

Fifteen grant proposals were submitted requesting \$3,591,340
in total first year costs.

Also, during this period nine grants were awarded totaling \$1,696,990.

Bradley Schulte, Ph.D., Vice Chair of Research

SUBMITTED 1/1/15 – 3/31/15:

Stephen Ethier, Ph.D.

Title: Oncogenic Signaling Network in Triple Negative Breast Cancer \$373,750 – Proposed Start Date 9/1/15

John Lazarchick, M.D.

Title: Factor VIII Assay-Field Study-MUSC Children's Hospital \$6,000 – Proposed Start Date 12/15/14

John Lazarchick, M.D.

Title: Baxter 071101 rVWF Study \$119,647 – Proposed Start Date 4/1/15

Rick Nolte, Ph.D.

Title: Impact of Rapid Identification of Bloodstream Pathogens \$44,833 – Proposed Start Date 3/1/15

Suhua Sha, M.D.

Title: Molecular Mechanisms in Noise-Induced Hearing Loss \$373,750 – Proposed Start Date 9/1/15

Avtar Singh, M.D.

Title: Mechanisms of Krabbe Disease Pathobiology and Therapy \$322,656 – Proposed Start Date 4/1/15

Avtar Singh, M.D.

Title: Nitrotylation Mechanisms for Protection Against Neurovascular Inflammation Injury \$322,656 – Proposed Start Date 5/1/15

Bart Smits, Ph.D.

Title: Uncovering Cancer Prevention Mechanisms Mediated by the Human 8q24 Non-protein Coding Cancer Susceptibility Locus \$30,000 – Proposed Start Date 4/1/15

Demetri Spyropoulos, Ph.D.

Title: Uniformity and Functional Testing of "Thawed Live" Patient Prostate and Bone \$299,000 – Proposed Start Date 12/1/15

Demetri Spyropoulos, Ph.D.

Title: A Lung Cancer Cryopreservation Approach that Maintains Cell Viability and Tissue Architecture \$448,500 – Proposed Start Date 12/1/15

Demetri Spyropoulos, Ph.D.

Title: Using Embryonic Stem Cell and Patient Biomarkers to Assess Human Health Impacts of Petroleum/Dispersant Component Exposure \$584,697 – Proposed Start Date 1/1/16

Gavin Wang, Ph.D.

Title: Elimination of Breast Cancer Stem Cells by Targeting c-Myc \$224,250 – Proposed Start Date 12/1/2015

Qi Wang, Ph.D.

Title: Evaluation of the Effects of the Anti-diabetic Drug Phenformin on HER2 Targeted Therapy in Breast Cancer \$30,000 – Proposed Start Date 4/1/2015

Dennis Watson, Ph.D.

Title: The Role of Fli1 in Cellular Differentiation and Development \$367,029 – Proposed Start Date 9/1/15

Je-Song Won, Ph.D.

Title: Development of S-Nitrosothiol-Based Therapy for Alzheimer's Disease \$44,302 – Proposed Start Date 5/1/15

RESEARCH DIVISION UPDATE—continued

AWARDED 1/1/15-3/31/15:

Tony Cheung, Ph.D.

Title: Functional Genomics Approaches to Identify Ovarian Cancer Genes \$149,999— Proposed Start Date 2/1/15

Hainan Lang, Ph.D.

Title: Experimental and Clinical Studies of Presbycusis Project 4 \$286,415— Proposed Start Date 1/1/15

Amanda LaRue, Ph.D.

Title: Hematopoietic Stem Cell-Derived Carcinoma Associated fibroblasts in tumor \$261,450— Proposed Start Date 2/1/15

John Lazarchick, M.D.

Title: A Phase 3 Prospective, Multicenter Study to Evaluate Efficacy and Safety of rVWF with or without ADVATE in Elective Surgical Procedures in Subjects with Severe Von Willebrand Disease \$128,721— Proposed Start Date 3/16/15

John Lazarchick, M.D.

Title: Factor VIII Assay-Field Study-MUSC Children's Hospital \$6,000— Proposed Start Date 12/15/14

Meenal Mehrotra, Ph.D.

Title: Mechanisms Regulating HSC-derived Osteogenic Population in Osteogenesis Imperfecta \$328,900— Proposed Start Date 3/1/15

Meenal Mehrotra, Ph.D.

Title: Role of Hematopoietic Stem Cells in Periodontal Ligament Homeostasis \$112,125— Proposed Start Date 4/1/15

Rick Nolte, Ph.D.

Title: Impact of Rapid Identification of Bloodstream Pathogens \$44,833— Proposed Start Date 2/9/15

Brad Schulte, Ph.D.

Title: Experimental and Clinical Studies of Presbycusis Project 3 \$378,547— Proposed Start Date 1/1/15

CONGRATULATIONS!

Gavin Wang, Ph.D.,

had his paper published online ahead of printing and
it has been highlighted in the
Hematopoiesis News at the link below.

<http://online.liebertpub.com/doi/abs/10.1089/scd.2014.0402?elq=dbc7de114bb456b8b7bf3cba3b52f78&elqCampaignId=3&>



FACULTY FOCUS

STEPHEN P. ETHIER, PH.D.

I am a native New Englander that was born and raised in the mid-sized western Massachusetts city of Chicopee, which was most famous for its large Polish-American community and proudly hosted the Chicopee Kielbasa festival every summer. In fact, the town once boasted of having the world's largest Polish sausage which, when stolen from the aforementioned Kielbasa festival, resulted in a report on the NBC Nightly News with John Chancellor. I think that was Chicopee's 15 minutes (or seconds) of fame. There were certain requirements for anyone growing up in western Mass. (as everyone called it) including an unwavering allegiance to the Boston Red Sox, a deep loathing of the New York Yankees, and indeed anything New York. This passion bled over to the Celtics and Bruins too, but with less verve. Clearly, I've been a sports fan all of my life, and in High School, my priorities were pretty much, girls, baseball, football, girls, and then school. So, I was an okay student, but a pretty darn good pitcher and quarterback. Being a pitcher and quarterback made the whole "girl thing" easier. Having achieved only better-than-average grades in High School, I went off to the small Benedictine-run liberal arts school in Manchester, NH called St. Anselms College. Political junkies will recognize this school because, being situated in Manchester and because of its well-respected Political Science Department, every four years becomes ground zero for the Presidential primaries. The days and weeks leading up to the New Hampshire Primary are heady times in Manchester. I was lucky enough to be there in 1976 (Decision '76 as it was called by the news media), and had a front row seat as all of the primary candidates came through our school, and the campus coffee shop where I did all of my studying. I was in the front row when an unknown Governor from Georgia stepped to the podium, smiled and confidently told us that he was going to be the next President of the United States. My friends and I chuckled, but Mr. Carter clearly had the last laugh. It was a very memorable time for me as Ronald Reagan, who was challenging Gerald Ford for the Republican nomination, visited our campus, with other movie stars such as Lloyd Nolan in tow (you have to be old to know who that is). Gerald Ford also made a New Hampshire campaign swing and my friends and I managed to finagle Press Credentials for the weekend, using some slightly exaggerated story about working for the college Newspaper. We followed the President around for three days and I was standing with the press core at the University of New Hampshire for one of his major speeches and chatting easily with a young Tom Brokaw and Roger Mudd. At the end of the

tour, I and my 1972 Chevy, ended up in the Presidential motorcade which took us all the way to the flight line at Pease Air force Base where Air Force One was waiting. The whole thing felt like a crazy dream, but it didn't end there, as connections that my friends and I made during that week led to a gig working for NBC news in Boston for their coverage of the Massachusetts Primary, which was held the following week. NBC paid us five bucks an hour to lug heavy things, build and tear down sets, and to run numbers to the analysts on election night. We were up all night and on set the next morning for the Today Show, where (I kid you not) I actually poured coffee for Barbara Walters during a commercial break. During the Today Show we were asked to sit behind the set and look busy, so I called my mother, told her to turn on the TV, where she could see me sitting in the background talking on the phone to her! It was a blast and it wasn't easy getting back to plain old boring college life after that.

As I was getting near the end of college, I had decided that I wanted to study Marine Biology in grad school, and so I signed up for a Marine Biology course that was offered by a consortium of New England colleges, and which met once per week on Saturday's at different locations in New England for a morning of lecture and an afternoon of lab. However, when I returned to campus in the fall of my senior year, I suddenly remembered that my college baseball team played double headers every Saturday in the fall. So, scrambling to make a course change, I dropped Marine Biology and signed up for Radiation Biology. That was a profound moment in my life because I enjoyed the Radiobiology so much that I changed directions, which is how I wound up the following year in grad school at the University of Michigan. While there, my interests grew and I became totally enthralled with ionizing radiation as a carcinogen, and following that path led me to the University of Tennessee and Oak Ridge National lab, which in those days was an amazing place to be a grad student, particularly if interested in Radiation Biology and carcinogenesis.

As a result of a series of 'miracles of fate' I ended up back in Michigan for a post-doc, and then back to the University of Michigan to join the faculty, where I spent 17 amazing years. The University of Michigan played an incredible role in my life. I was proud to ultimately rise to the rank of full professor there, and since both of my kids were born at the UM Hospital, my connection to Ann Arbor and the Maize and Blue is very strong indeed.

But, I am an east coast kid to my core and so finally having the opportunity to move to Charleston and join MUSC was an opportunity that I couldn't pass up. I feel at home here in ways I never experienced living in Michigan, even though I spent over 30 years there. Childhood connections are powerful things and my heart still belongs to the Red Sox, though I am every bit as passionate about the Wolverines. There is nothing I love more than being by the sea, and having the opportunity to sail my boat in these waters is a special treat. I and my family are looking forward to many more wonderful years here in Charleston.

Stephen P. Ethier, Ph.D.
Department of Pathology & Laboratory Medicine
Professor
Department of Medicine
Interim Director, Center for Genomic Medicine
Program Leader, Cancer Genes and Molecular Regulation Program
Office: Bioengineering Building 4th floor
Phone: (843) 876-2537
<https://www.musc.edu/pathology/website/people/individual/ethier.html>

Pathology IT News

By: Tony Eisenhart

It has been a busy year so far for the Pathology IT team and it's only April!

The Clinical division has a number of important projects coming to fruition.

Our CoPath Citrix Server environment is getting a major upgrade, transitioning from Citrix Server version 5.0 to Citrix Server version 6.5. Two additional servers are being added to the CoPath server cluster to better balance application performance and user load. Although this transition is transparent to our CoPath user population the behind the scenes work and validation testing that has gone into this project is substantial. This project is almost completed and the new Citrix Server environment will be on line very soon.

Later this year, in the September\October 2015 time frame, the CoPath Code Upgrade will be taking place. This is different than the previously mentioned Citrix Server upgrade in that the actual programming code that is CoPath (all those 1's and 0's) will be getting upgraded. In conjunction with the code upgrade additional software licenses have been purchased for CoPath allowing for a greater number of users and devices to be used in the department.

Additionally the LIS team will be incorporating the "Cerner Millennium P2 Sentinel" module into the Laboratory Information System, or Cerner. This will enable a more robust auditing functionality of end user activity in Cerner similar to the auditing functionality currently available in Epic.

The Academic\Research division has also seen a flurry of activity so far this year.

Progress continues to be made upgrading the shared conference spaces in the department. The Children's Hospital conference room, as well as the first floor conference room in Walton Research, have both undergone updates. New carpet and fresh paint nicely compliment the 80 inch touch screen Smart Boards that have been installed in both locations which greatly expand the interactive and presentation capabilities of each space.

MATCH DAY - MARCH 20TH

INCOMING 2015-2016 RESIDENTS

Match day for incoming residents was on March 20 and once again we are fortunate to have matched an outstanding group of individuals who will be spending the next four years with us. This year our program received just under 400 applications for our 5 positions, and we ended up interviewing approximately 50 individuals from all across the country. We received great feedback from the interviewees and our program has certainly become more and more respected and competitive over the last several years. Thanks to all for the hard work you put in on a day to day basis to keep our training program strong and continually improving. Without further ado, here is the MUSC Pathology residency class of 2019 . . .



Tiffany Baker, MD, PhD- Tiff is well known in our department and is a native Charlestonian who went on to attend the College of Charleston before matriculating to MUSC. Tiff originally entered as a pure PhD student before changing gears and being accepted to the MD/PhD program. Her research was performed within our department and was focused on hearing loss. The research was very successful and resulted in publications, numerous presentations, and several internal and external awards.



Kendall Brewer, MD- Kendall is another one of our outstanding MUSC students. She is a native of Ohio, where she grew up and attended Ohio University before making the move to South Carolina. Kendall has been very involved in various volunteer efforts in the community and had held several leadership positions at MUSC. These efforts, along with her academic prowess, helped her be nominated to the Alpha Omega Alpha honor society this past year.



Ryan Jones, MD- Ryan was born and raised in West Virginia. Like our own Dr. Smith, Ryan went on to graduate college from West Virginia University and is a soon to be graduate of the West Virginia University School of Medicine. Ryan comes to us with a good deal of pathology experience as he completed a post-sophomore fellowship in pathology at West Virginia during medical school. During that year, he completed 7 months of clinical rotations in various disciplines of anatomic and clinical pathology and 3 months of translational research.

MATCH DAY - MARCH 20TH - 2015-2016 INCOMING RESIDENTS - CONT'D



Dan Rolando Lopez Garcia, MD- Dan is a native of Mexico where he attended medical school and completed a dermatology residency at the Universidad Autonoma de Nuevo Leon Facultad de Medicina in Monterrey. Dan was practicing dermatology in a private practice with his father when he decided to follow his dreams and pursue training as a dermatopathologist in the United States. After gaining citizenship, Dan was accepted into an international dermatopathology fellowship at Wake Forest. In his year at Wake Forest he gained valuable pathology experience and was able to author two publications.



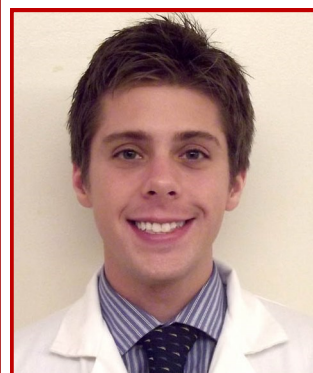
Alisa Tykal, MD- Alisa is the third MUSC student in this year's class. Like Tiffany and Kendall, Alisa thrived in medical school and is one of the top students in her class, as evidenced by being one of only 10 members of her class nominated to the Alpha Omega Alpha honor society during her third year. Additionally, she has been involved in several volunteer, research, and teaching activities while at MUSC. Alisa is originally from Michigan and moved to South Carolina in middle school. She then went on to attend Clemson University before matriculating to MUSC.

2015-2016 INCOMING FELLOWS

CYTOPATHOLOGY FELLOWS



Laleh Ehsani, M.D.- Laleh is a native of Tehran, Iran where she attended Tehran University of Medical Sciences in Iran where she obtained her MD in 1993 and then completed 4 years of AP/CP Residency. She worked as an AP/CP Pathologists at Razi Hospital in Iran from 1998—2004. In April 2007, Laleh began work as a Research Assistant at the Veterans Affairs Medical Center in Atlanta, GA. She is currently working in her fourth year of AP/CP residency at Emory University in Atlanta, GA.



Justin Fender, M.D.- Justin was born in Asheville, NC. In May of 2005, he received his B.S. in Biomedical Engineering at The University of North Carolina at Chapel Hill and then went on to receive his M.D. in May of 2010. Justin is currently working in his fourth year of AP/CP Residency at the Mount Sinai Hospital in New York.

Cont'd - CYTOPATHOLOGY FELLOWS



Qun Wang, M.D.– Qun was born in Chengde, Hebei, China. She obtained her M.D. at the Norman Bethune University of Medical Sciences in 1986 where she then went on to obtain her M.Sc. In Pathology in 1989. Qun obtained her Ph.D. in 1998 from the Norman Bethune University of Medical Sciences in China and Akita University School of Medicine in Japan. She completed her Residency in 1986 in China from the Norman Bethune University of Medical Sciences. She is currently working in her fourth year of AP/CP Residency at the University of California Irvine Medical Center.

DERMATOPATHOLOGY FELLOWS



Ashley Hamstra, M.D.– Ashley was born in Sonora, CA. She received her BA in Spanish at the Walla Walla University in Washington. In May, 2011, Ashley obtained her M.D. from the Loma Linda University School of Medicine. She worked from June, 2011– June 2012 at the Arrowhead Regional Medical Center in Colton, California. She is currently working in her fourth year of AP Residency at the Loma Linda University Medical Center in California.



Tom Soike, M.D.– Tom was born in Tennessee. He received his Bioengineering Degree at Vanderbilt University in Tennessee. In May, 2011, Tom obtained his M.D. at the East Tennessee State University. He is currently working in his fourth year of AP/CP Residency in the Department of Pathology and Laboratory Medicine at the Medical University of South Carolina.

FORENSIC PATHOLOGY FELLOW



Angelina Phillips, MD-Angelina was born in Georgetown, Guyana (South America). She received her B.A. in Anthropology in 2005 at the New York University and her M.S. at the Columbia University Institute of Human Nutrition in New York, in 2007. Angelina obtained her M.D. in May 2011, from SUNY Upstate Medical University in New York. She is currently working in her fourth year of AP/CP Residency at Baystate Medical Center in Springfield, Massachusetts.

HEMATOPATHOLOGY FELLOW



Matthew Mastrodomenico, M.D.— Matthew was born in Durham, NC. He received his B.S. in Biochemistry in 2006 from the Centenary College of Louisiana. Matthew obtained his M.D. in 2011 from the Louisiana State University Health Sciences Center in Shreveport, Louisiana. He is currently working in his fourth year of AP/CP Residency at Duke University Medical Center in North Carolina.



SURGICAL PATHOLOGY FELLOW

Andrew Rand, M.D.— Andrew was born in New York City, NY. He received his B.A. in Biology in 2007. In May of 2011, Andrew obtained his M.D. from the University of Rochester School of Medicine and Dentistry in New York. He is currently working in his fourth year of AP/CP Residency at Duke University Medical Center in North Carolina.



Sherry Okun, M.D.— Sherry was born in Fort Walton Beach, FL. She received her B.S. in Biology at Eckerd College in St. Petersburg, Florida, in 2005. She then received her M.B.A. in Business with emphasis in Health Care Administration from Davenport University in Grand Rapids, Michigan. In May 2011, Sherry obtained her M.D. at St. Matthew's University in the Cayman Islands. Sherry is currently working in her fourth year of AP/CP Residency in the Department of Pathology and Laboratory Medicine at the Medical University of South Carolina.

UPCOMING MEETINGS

- ♦ APC - Association of Pathology Chairs Meeting, July 14-15, 2015
- ♦ ASCP / AFP - (American Pathology Foundation) Meeting, October 28-30, 2015
- ♦ SNO - Society for NeuroOncology Meeting, November 19 - 22, 2015

NEXT ALL HANDS MEETING

WEDNESDAY, SEPTEMBER 16, 2015

DEPARTMENT HOLIDAY CELEBRATION

AT THE SC AQUARIUM

ON DECEMBER 11, 2015

MUSC Department of Pathology & Laboratory Medicine Mission Statement:

To serve patients, health care providers, research scientists, scholars, and society by providing excellence and innovation in diagnostic services and educational resources in a respectful, professional and culturally diverse atmosphere.

Vision:

To become a preeminent leader in academic anatomic and clinical pathology while translating basic science discovery to improved clinical care.

www.musc.edu/pathology