

Accompanying Notes for the ESOPHAGEAL HIGH RESOLUTION MANOMETRY (HRM) ELEARNING COURSE

Version eL-Mano-EN-0202v1.020

Note:

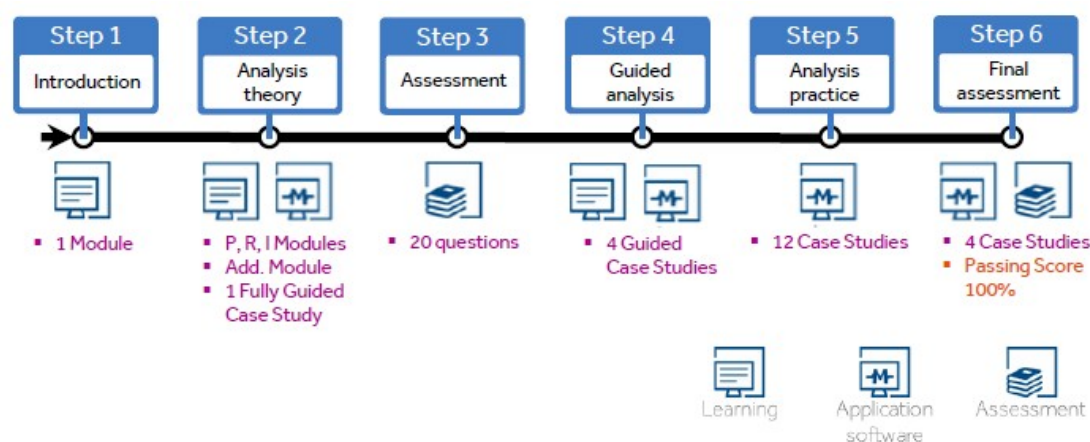
We recommend sharing this document with physicians prior to them starting the course.

Contents

Course Overview	3
Supported Web Browsers	3
Logging into the Course Website	3
IMPORTANT NOTICE FOR A NEW USER	4
GUI Training Tool within course	7
Features within each Analysis Theory Slide Session	7
Keeping the ManoView™ Software application open during Step 2 theory sessions	7
ManoView™ Software application after any practice session	7
Using PDF Documents Embedded in Moodle	8
Course attendance certificate	9
Confirm Course Completion	9
Basic Troubleshooting	10
Known Irregularities	10
Reporting an Irregularity	10

Course Overview

- The eLearning Course provides a web-based learning tool on how to correctly analyze, report and interpret Esophageal High Resolution Manometry studies using the ManoView™ Software application.
- The course includes a blend of:
 - Theoretical learning
 - Theory knowledge & real case assessments
 - Analysis practice with the application software
- It comprises 6 steps:



- Further details of the course overview can be viewed and printed from the welcome section of the **My Learning** page.
- Note that any step or session can be repeated.

Supported Web Browsers

The following web browsers or higher are supported in this course:

- **Google Chrome** 56.0 on Windows PC
- **Internet Explorer** 11.0.38 on Windows PC
- **Mozilla Firefox** 51.0.1 on Windows PC
- **Microsoft Edge is NOT supported in Windows 10** – instead use **Google Chrome** or **Mozilla Firefox**.

Please note that use of an older version of any web browser will not function properly with this course.

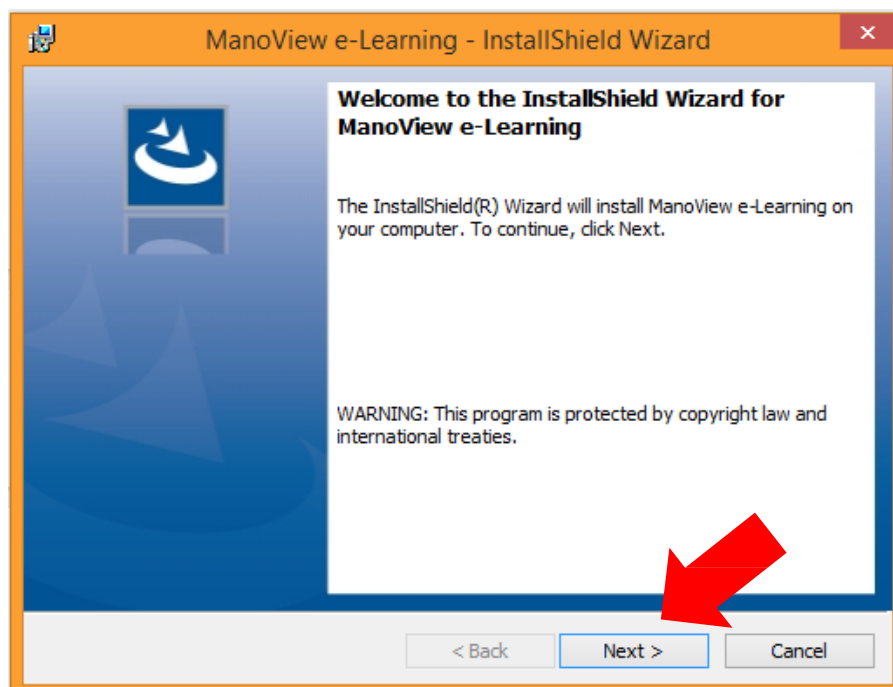
Logging into the Course Website

- Open your default web browser.
- To login to the site, type in the following in the top of the browser:
<http://usnew.hrm-elearning.com/>
- When the login page appears, type in your username, and password. These are case-sensitive.
- The course **Home** page will appear.

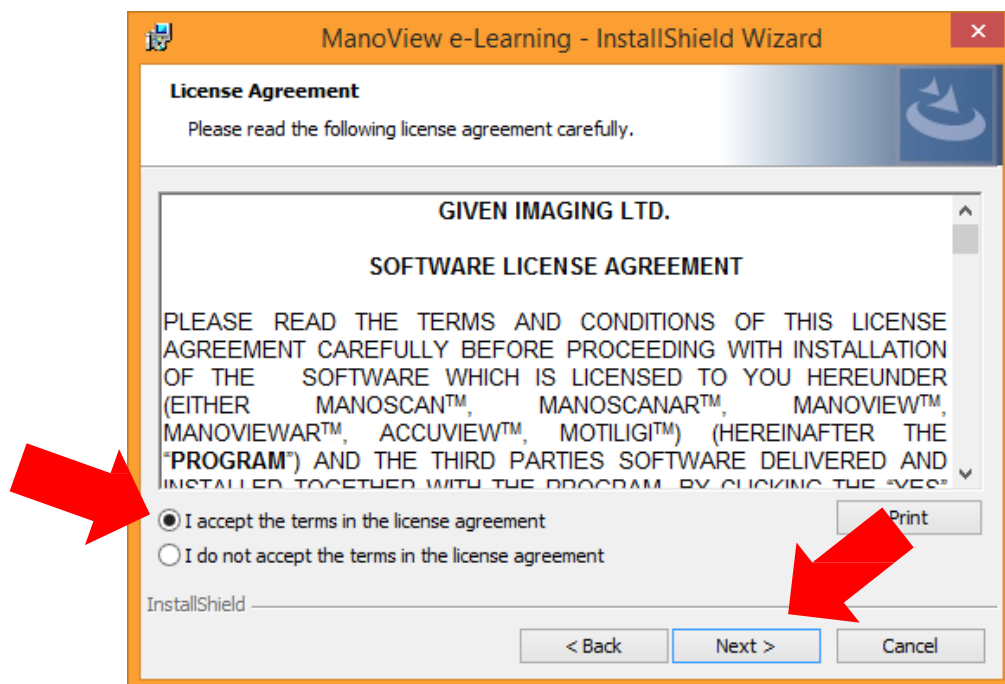
- Run through a Home page tour which describes all its different sections by clicking on "**Begin a short tour of the Home page**".
- The course steps are all under the **My Learning** page.
- Run through a course tour which describes all its different steps by clicking on "**Begin course tour**".
- Save the current website address as a bookmark or add to your favorites.
- The following sections provide some important additional information you will need while running through the course.
- Good luck with the course!

IMPORTANT NOTICE FOR A NEW USER

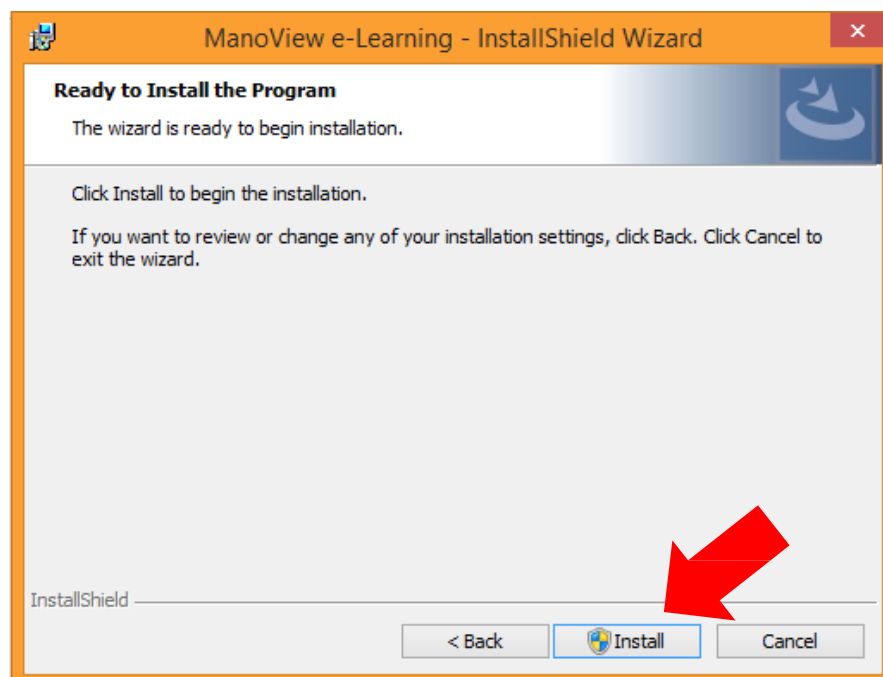
- You need to perform a one-time installation onto your laptop for the eLearning ManoView™ Software application, case studies to be used and special feedback tools.
- This installation can take a while and depends upon your internet connection.
- Instructions are provided by the Install tool, and as shown below.
- Please press the **Click to install** link in the HOME page to begin the download and installation process.
- Note the software is downloading and may take many minutes, as indicated in the lower left side of your browser window.
- Click on the **Manoview.msi** icon in the lower left side of your browser window to start the installation.



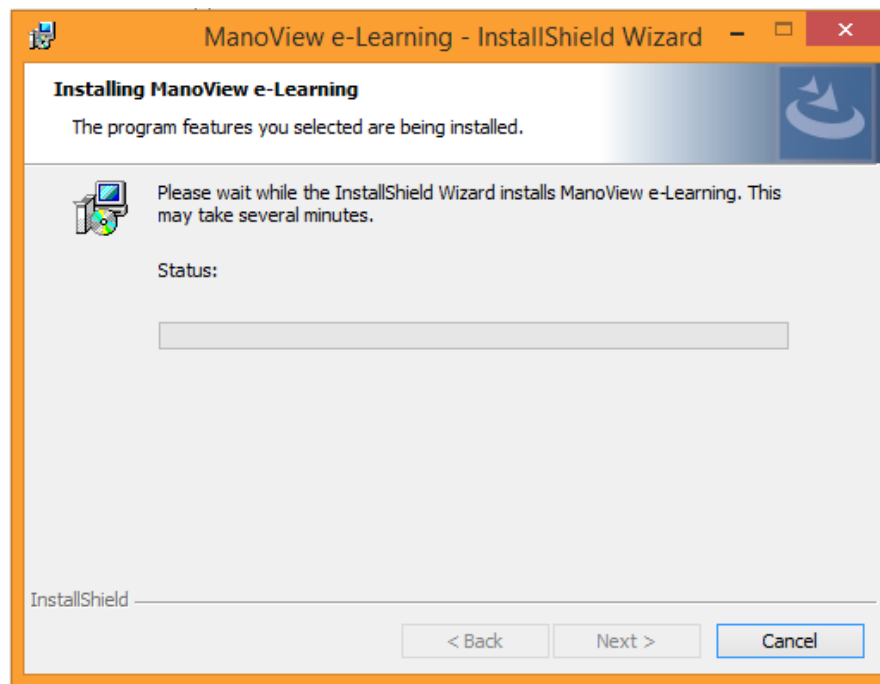
- Click on the **Next** button as shown.



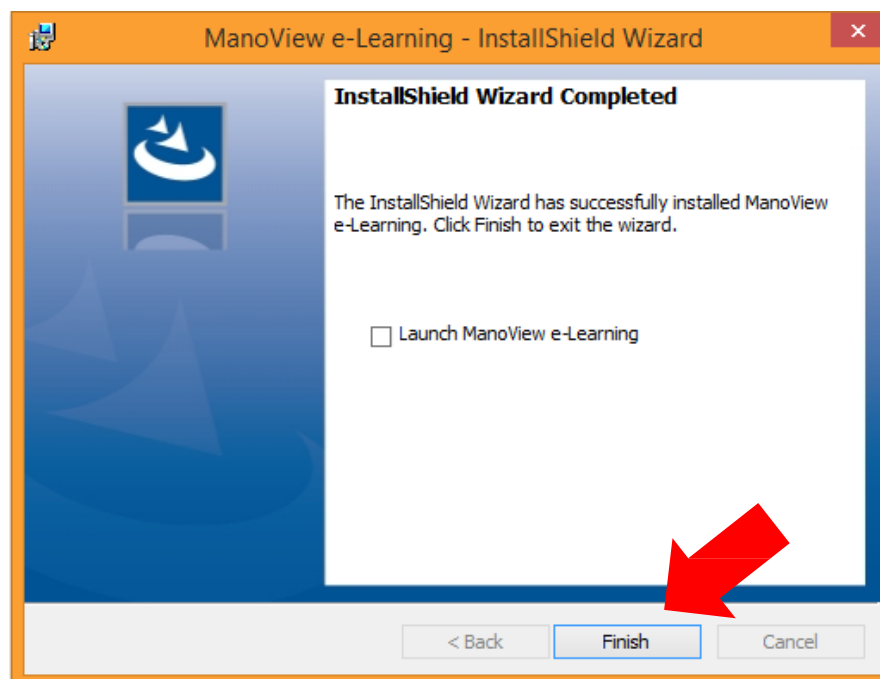
- Click on the "I accept the terms...", then on the **Next** button as shown.



- Click on the **Install** button as shown.



- After a few minutes during which the installation is made on your laptop, this screen is shown.



- When the installation is finished, click on the **Finish** button as shown.
- You may now start the course.

Features within each Analysis Theory Slide Session

Note the following features in each Analysis Theory slide session of Steps 1 and 2:

- Click on “**Menu**” in any slide to get a list of all the sub-sections – allows you to jump to any section of the current slide session.
- Click on “**eLCT**” – shows the layout of the entire course with text overlays. It also appears as the first main slide of each session.

GUI Training Tool within course

- This Training Tool is specifically for use with the eLearning course while running the ManoView™ Software application. It provides you with step-by-step instructions for reviewing the case study and monitors your success by providing appropriate feedback.
- Full details of the Training Tool can be viewed and printed within Step 2 of the course.





Keeping the ManoView™ Software application open during Step 2 theory sessions

- Step 2 is the Analysis Theory step which comprises several slide sessions intermingled with practice on the ManoView™ Software application on your laptop with a single normal HRMZ case study.
- After completing the practice session instructions in the Prepare part and also after the Review part, you will need to return to the main course to continue with the next slide session.
- The Training Tool that accompanies the ManoView™ Software application will guide you when and how to revert back to the course.
- Do not exit out of the ManoView™ Software application or Training Tool to revert back to the course, as you will then need to start the practice session again from the beginning.

ManoView™ Software application after any practice session

- After completing any practice session on the ManoView™ Software application in Steps 2, 4, 5 and 6, click on the “**SUBMIT**” button in the Training Tool to allow it to check the accuracy of your analysis.
- If you wish to return to the case study to redo parts or all of the analysis, simply make your changes in the ManoView™ Software application and click on the “**RE-SUBMIT**” button to allow the tool to recheck your work.
- Once you are satisfied with the results, click on the “**FINISH**” button to close both the Training Tool and the ManoView™ Software application. This automatically takes you back to the course main page, at the step you were in before the practice.
- With each Step 4, 5 and 6 case study, you can view a summary of your last results as follows:

- Click on the small graph icon () alongside the case study number. After several seconds a window with a table, such as below, is displayed:

Details									
Manoview tests results									
Receive date	eLevel	result	total swallows	total swallows analyzed	total swallows failed	total swallows passed	Analysis file	PDF file	
3/7/2017, 4:43:31 PM	5.6 - Distal Esophageal Spasm	Fail	10	10	5	5	Download	No file attached	View details 

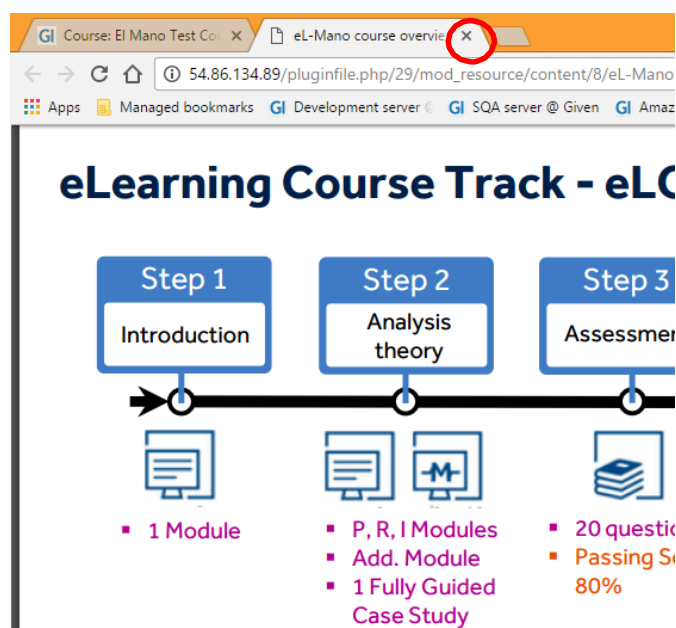
- By clicking on “**View details**” in the last column, as indicated above, details for each failed swallow frame are shown, as in the example below. “**actual**” is your current value.

Details			
Failed swallows			
number	params		
5	name	expected	actual
	gastric_location	-2.030387	-1
6	name	expected	actual
	gastric_location	-2.320442	-1
8	name	expected	actual
	gastric_location	-2.46547	-1
9			

- Please note that location values are in centimeters and all relative to the innermost sensor in the stomach, so are therefore displayed with negative values.
- Clicking on the top right corner of the table window on an “X” (may not be clear) or by clicking anywhere outside the window returns you to the course.

Using PDF Documents Embedded in Moodle

- To view and print any of PDF documents within the Moodle My Learning page, click the **View** button. The PDF opens in a new tab window, as in the picture below.
- Clicking within the slides displayed adds a bar of options on top of it, including print.
- To close the document and return to the course, click the “**X**” in the tab title of the Internet browser (as shown circled in the picture).



Course attendance certificate

- After you successfully complete the eLearning Course you may view and print out a personalized attendance certificate with date.
- To do so, press on **"Click here"** or the Certificate view line in the course at the end of Step 6.



Confirm Course Completion

- After you have successfully completed the course and printed out your certificate, you will get a message at the end of Step 6 to confirm you have completed the course.
- Please press on **"Click to Confirm Completion"** to approve your completion of the course.
- Upon doing so, the original Downloaded Package installed on your laptop will be removed.

Basic Troubleshooting

If you experience any of the following scenarios, please try the recommended procedure below:

- *User cannot login to website course* – check correct use of username and password, including the correct case to use for each one.
- *Slow course response while running the slide modules video clips* – run "[speedtest.com](https://www.speedtest.com)" to confirm your connection download speed.
- *Theory slide session or ManoView™ Software application practice does not open* – you may be using an old web browser which is not supported. Check above for the supported web browsers and version numbers.
- *"Cannot send to server" in Training Tool when case study completed* – Laptop lost connection with the main course page. Your case study results are stored in your laptop, and the Training Tool will try again when next connected.
- This course does not accommodate interruption or saving of intermediary results of any of the practice case studies while using the ManoView™ Software application. Hence if you force the ManoView™ Software application to close, and return to the main course page, you will see the case study remains in "Not started" mode. When you next continue, you will need to rerun the same case study from the start again.

In the event this did not help, please report it to your regional Customer Support office.

Known Irregularities

- Case study 4.4 has been known to get into an endless loop during analysis of swallow 1 with "Left Bracket alignment with UES relaxation". We are working on a fix. In the meanwhile, although you can use it, it does not affect the course flow.

Reporting an Irregularity

In the event of an irregularity while running the course or if a question arises on its functionality or operation, please contact your regional Customer Support office via the following email address (also to be found in the Welcome part of the **My Learning** page):-

lora.l.willkie@medtronic.com

Provide as much detail as is required, including any screenshots to demonstrate the issue.