



# **Building Hope: SC's Comprehensive Suicide Prevention Approach**



# AT THE END OF TODAY'S SESSION,

- ❖ Participants will be able to describe the “mental health landscape” in South Carolina, including SC specific data.
- ❖ Participants will be able to identify best practice methods of care for preventing suicide, i.e. treatment and community approaches.
- ❖ Participants will be able to identify 3 ways they can engage in suicide prevention in their communities.





# SC 2020 SUICIDE DATA RAW NUMBER TOTALS



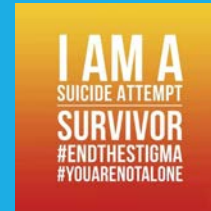
**23,975 Visits**

There were **23,975** ED visits with Suicidal Ideation in 2020.



Every **22 minutes** a South Carolinian is treated in the ED for Suicidal Ideation, or **66** people a day.

**6,801 attempts**



There were **6,801** suicide attempts in 2020.



**Every 77 minutes**, a South Carolinian is treated in the ED for a Suicide Attempt, or **19** people a day.



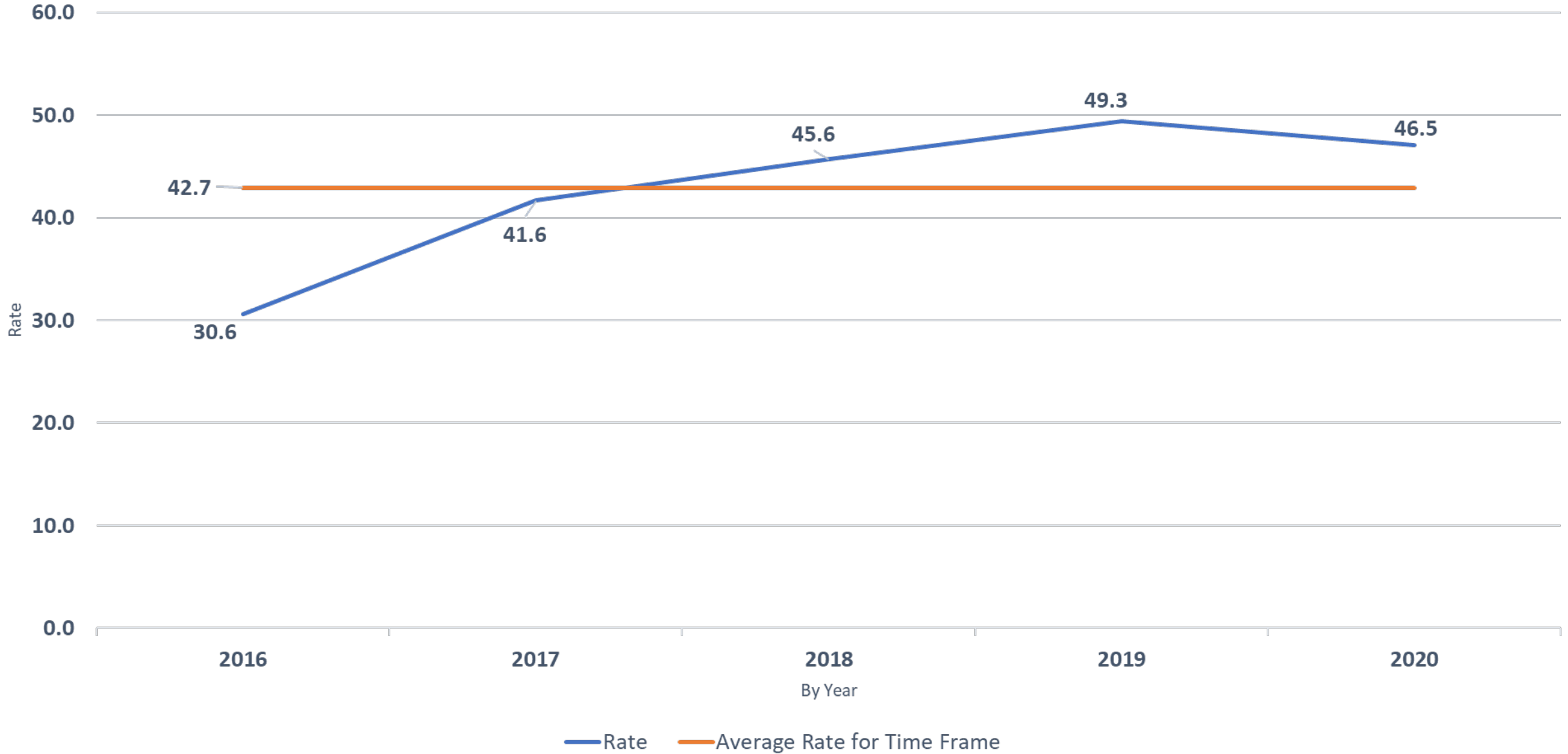
There were 22,584 ED visits with Mental Health Trauma in 2020.



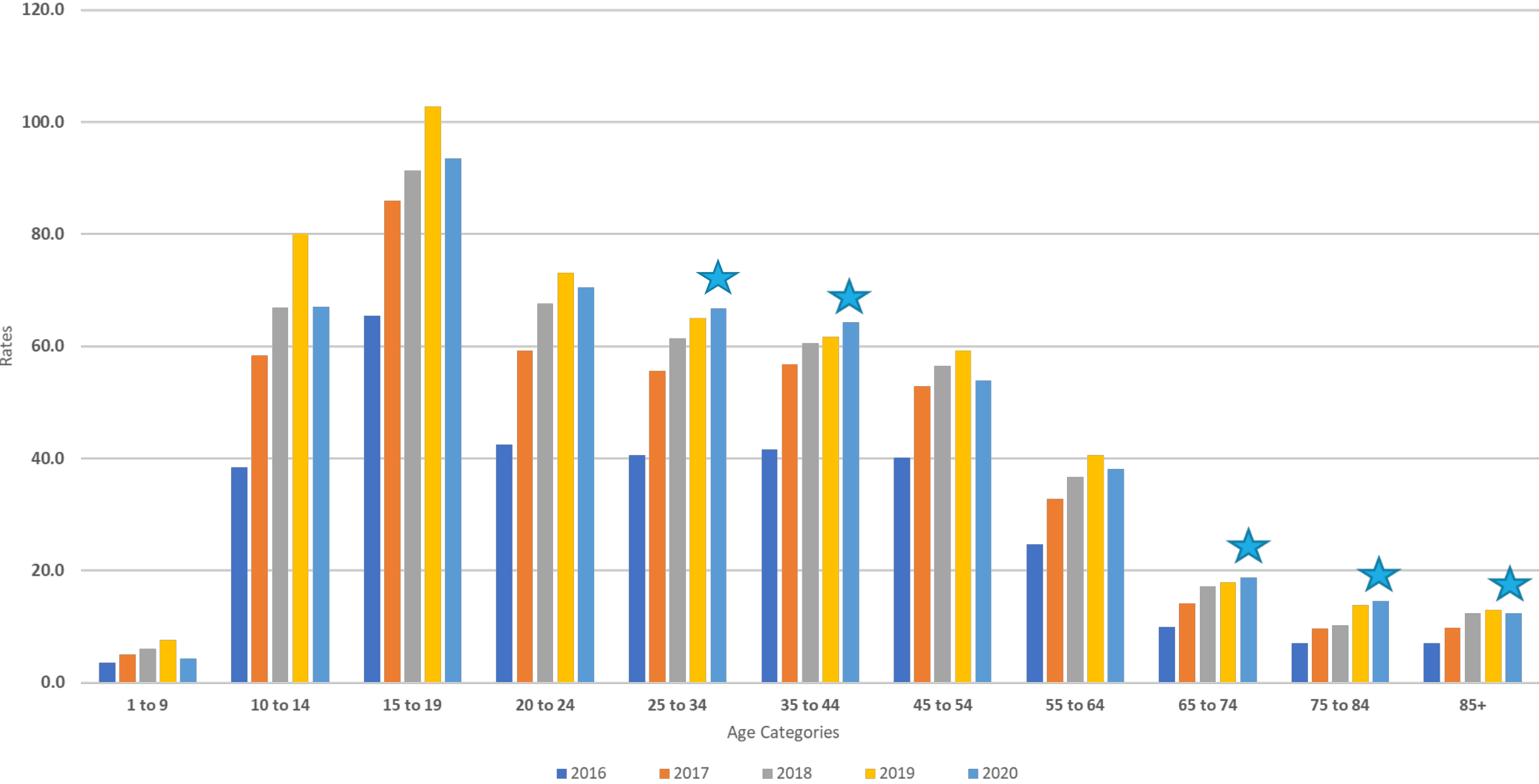
Every 23 minutes a South Carolinian is treated in the ED for Mental Health Traumas or 62 people a day.



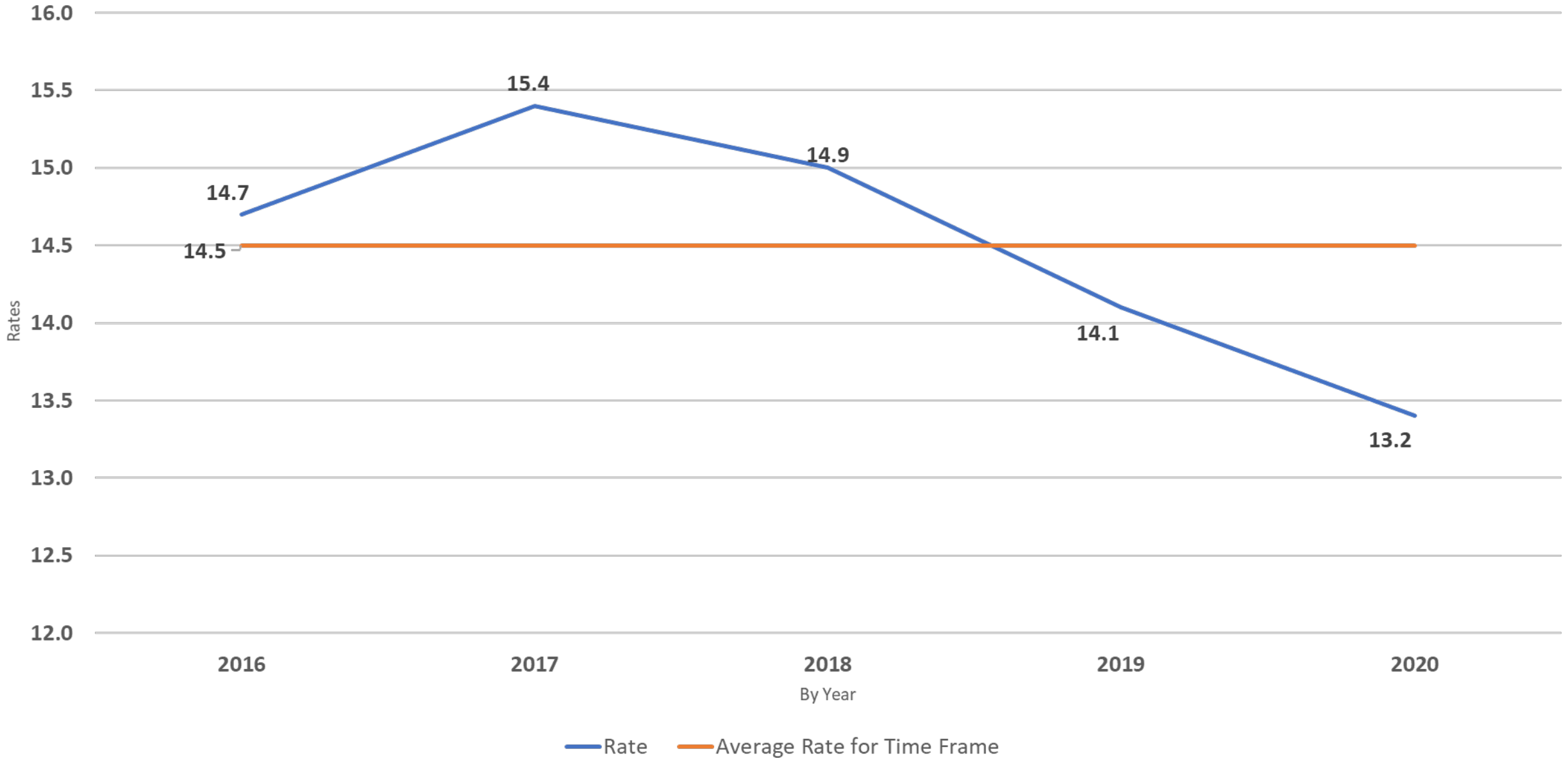
## SC Suicidal Ideation Rates 2016-2020



SC Suicidal Ideations by Age  
2016-2020

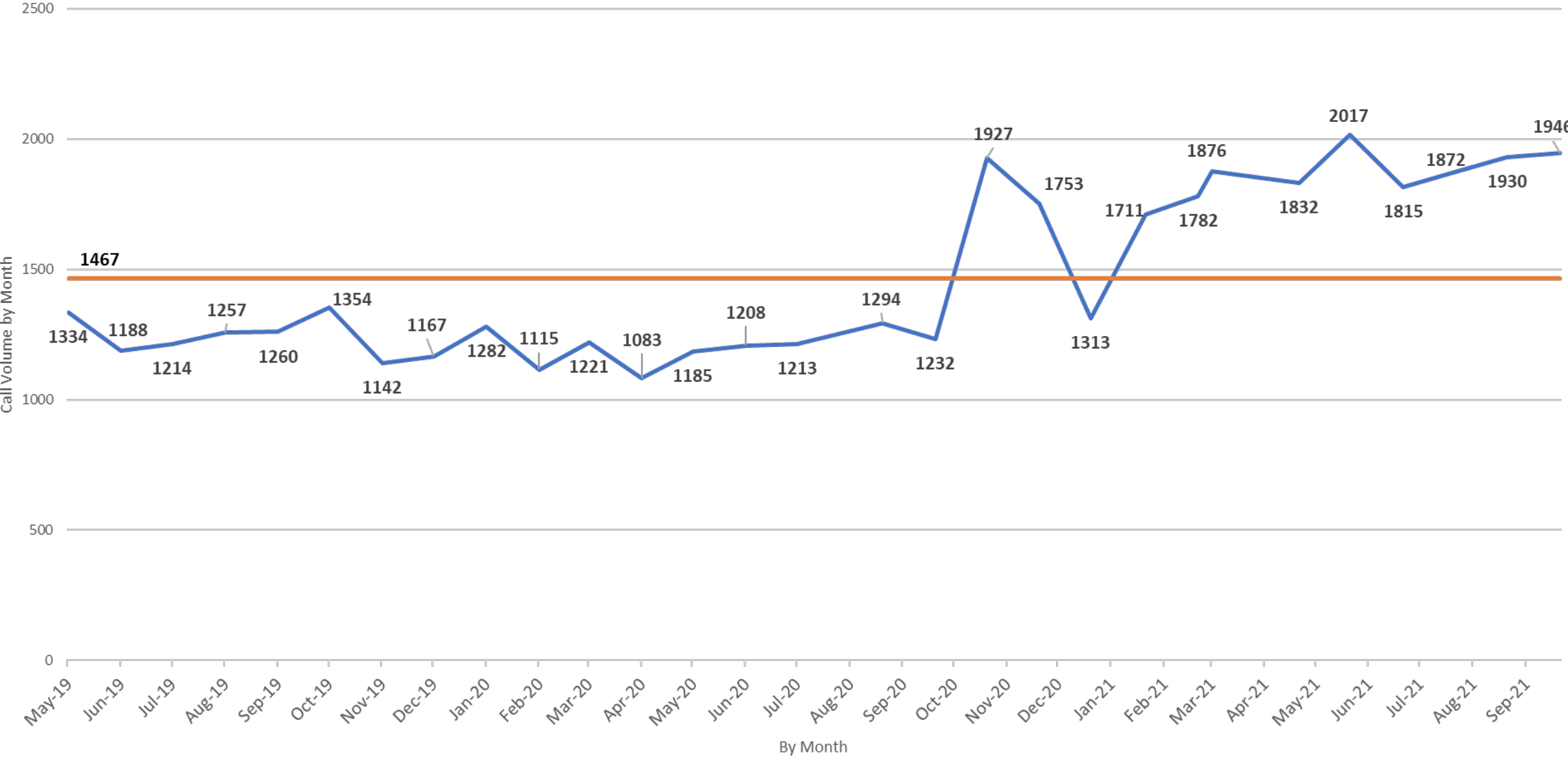


## SC Suicide Attempt Rates 2016-2020



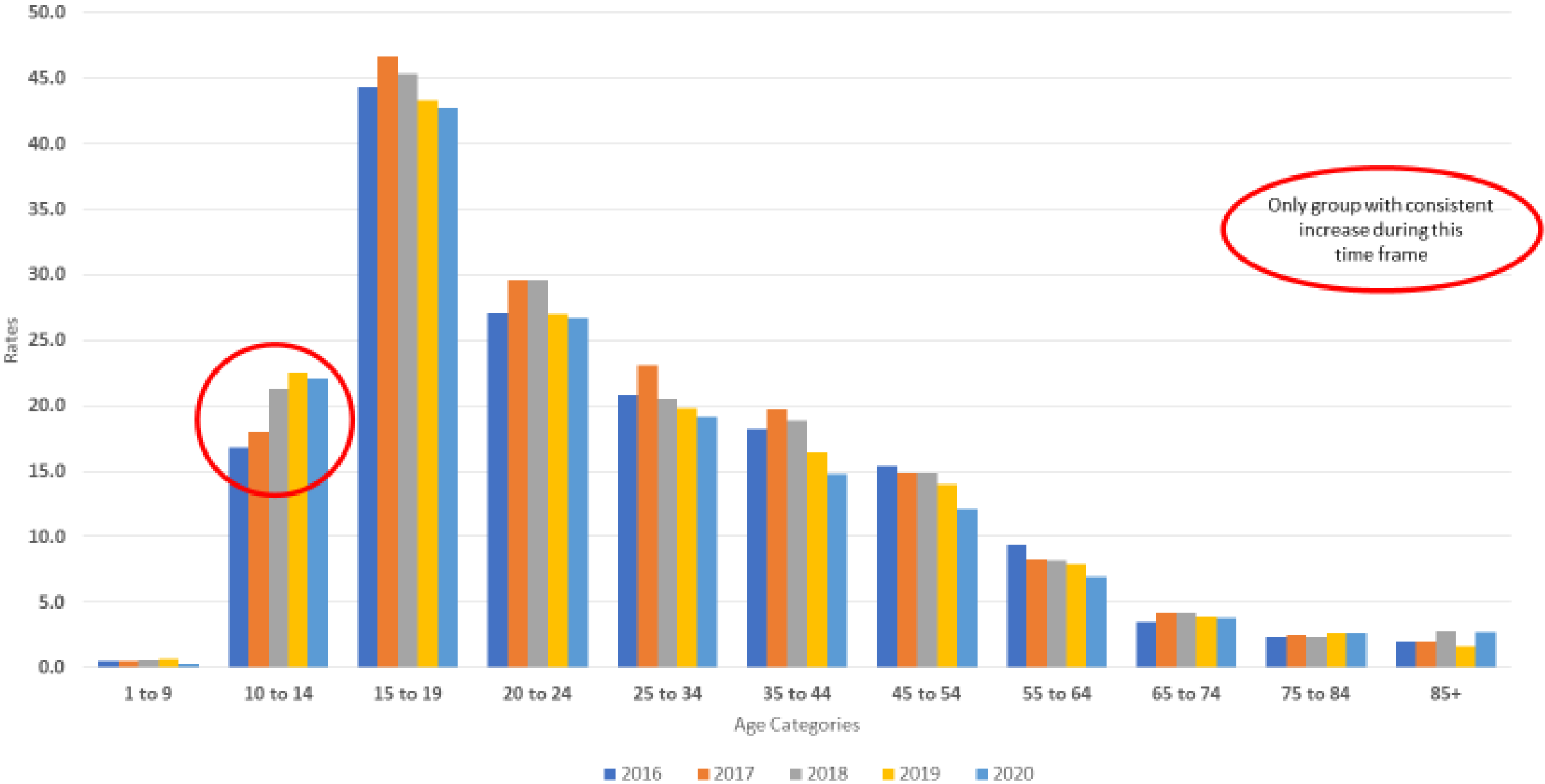


EMS Self Harm Calls  
May 2019-Sept 2021

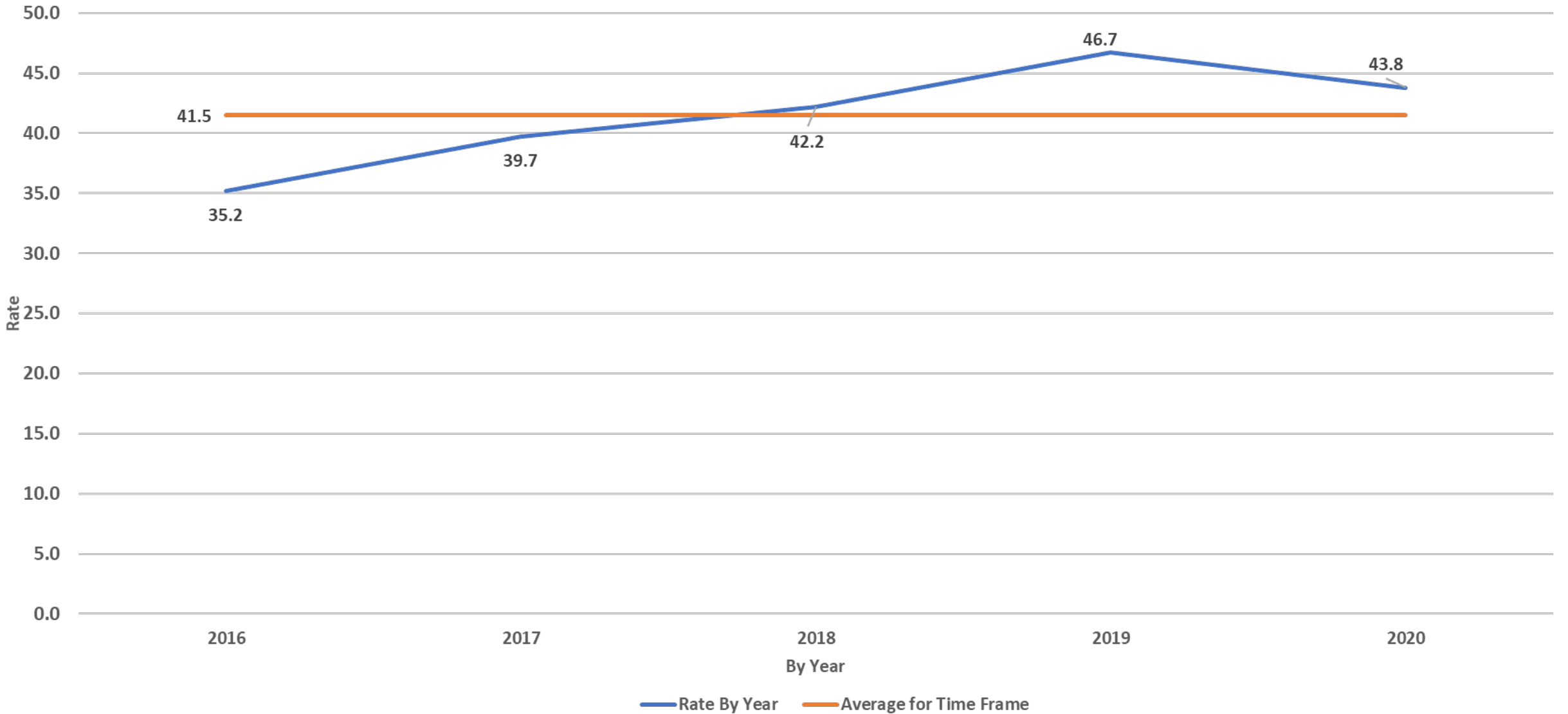


Call Volume by Month      Average Volume for Time Frame

SC Suicide Attempts By Age  
2016-2020

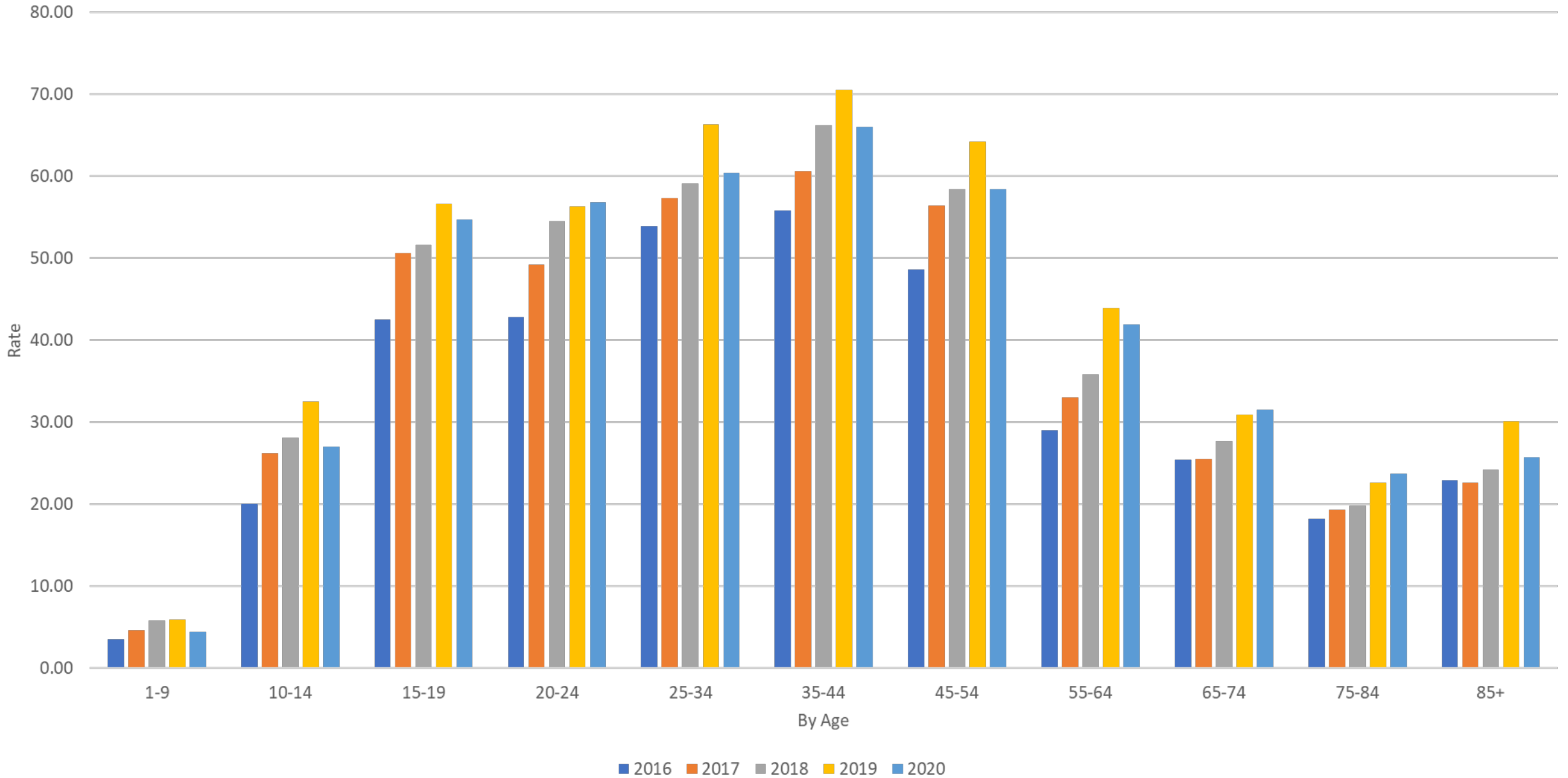


## SC Mental Health Trauma Rate 2016-2020



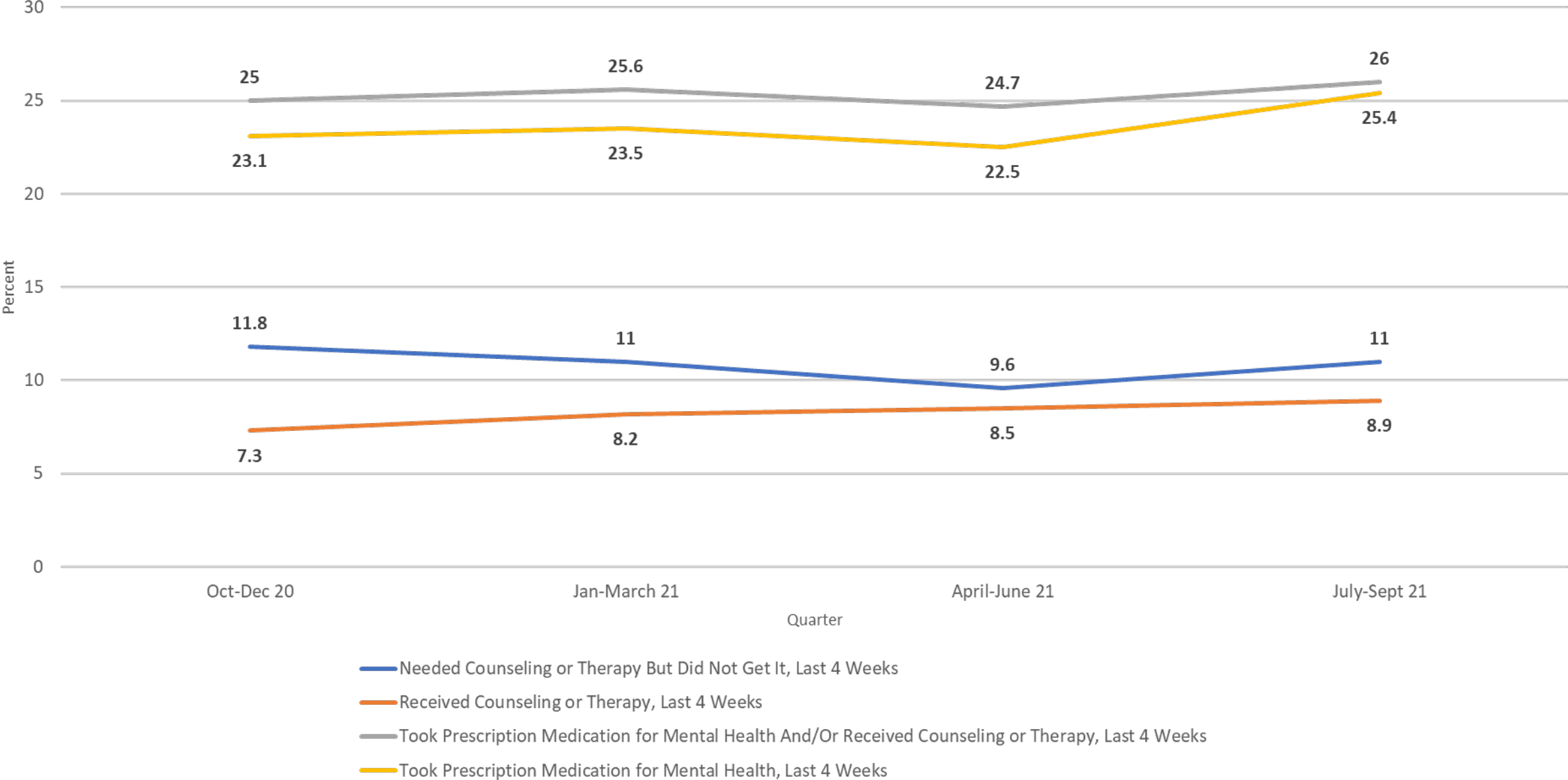
# SC Mental Health Trauma by Age

## 2016-2020



# SC Mental Health Care Trends

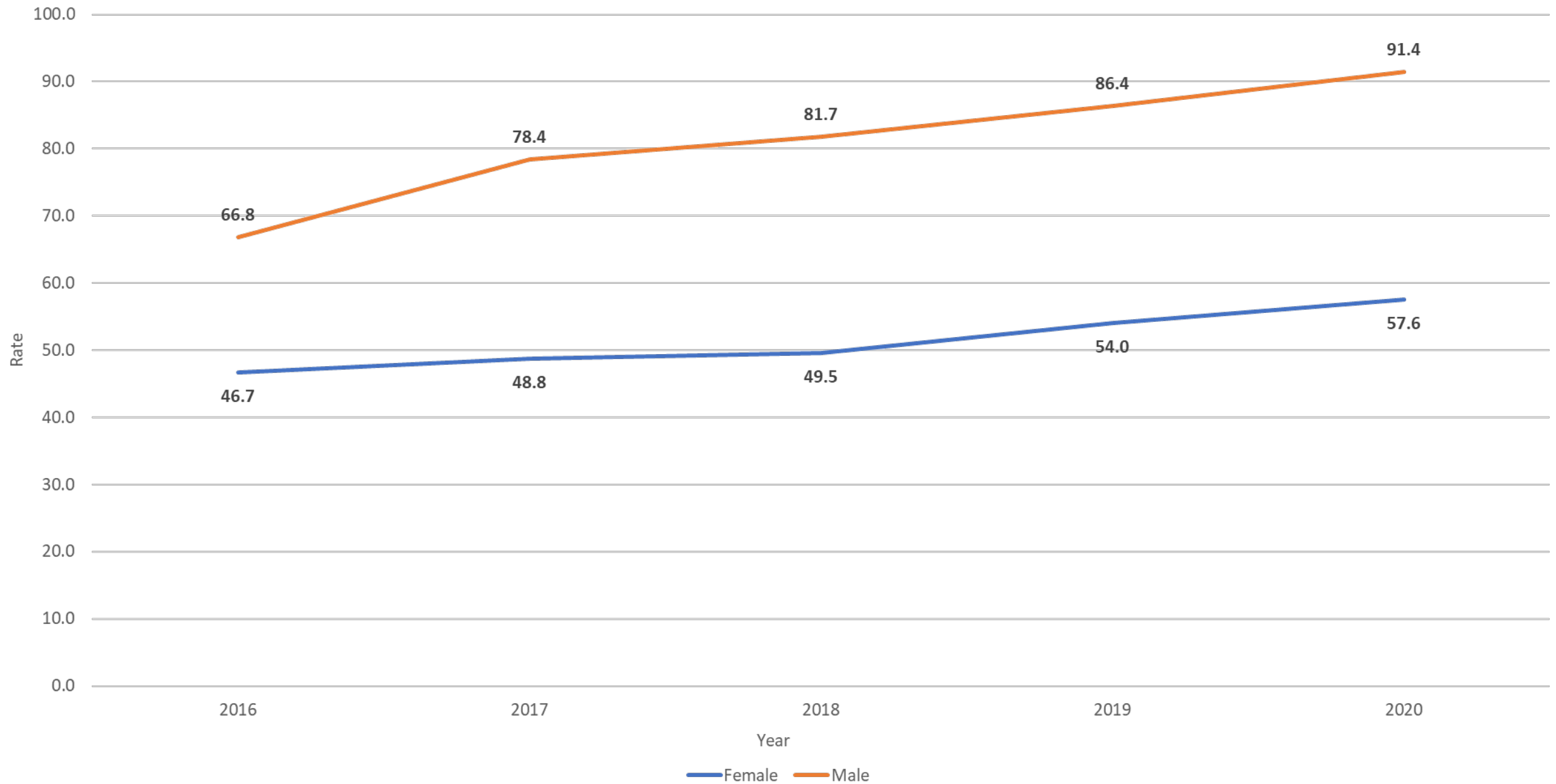
## Oct 20-Sept 21



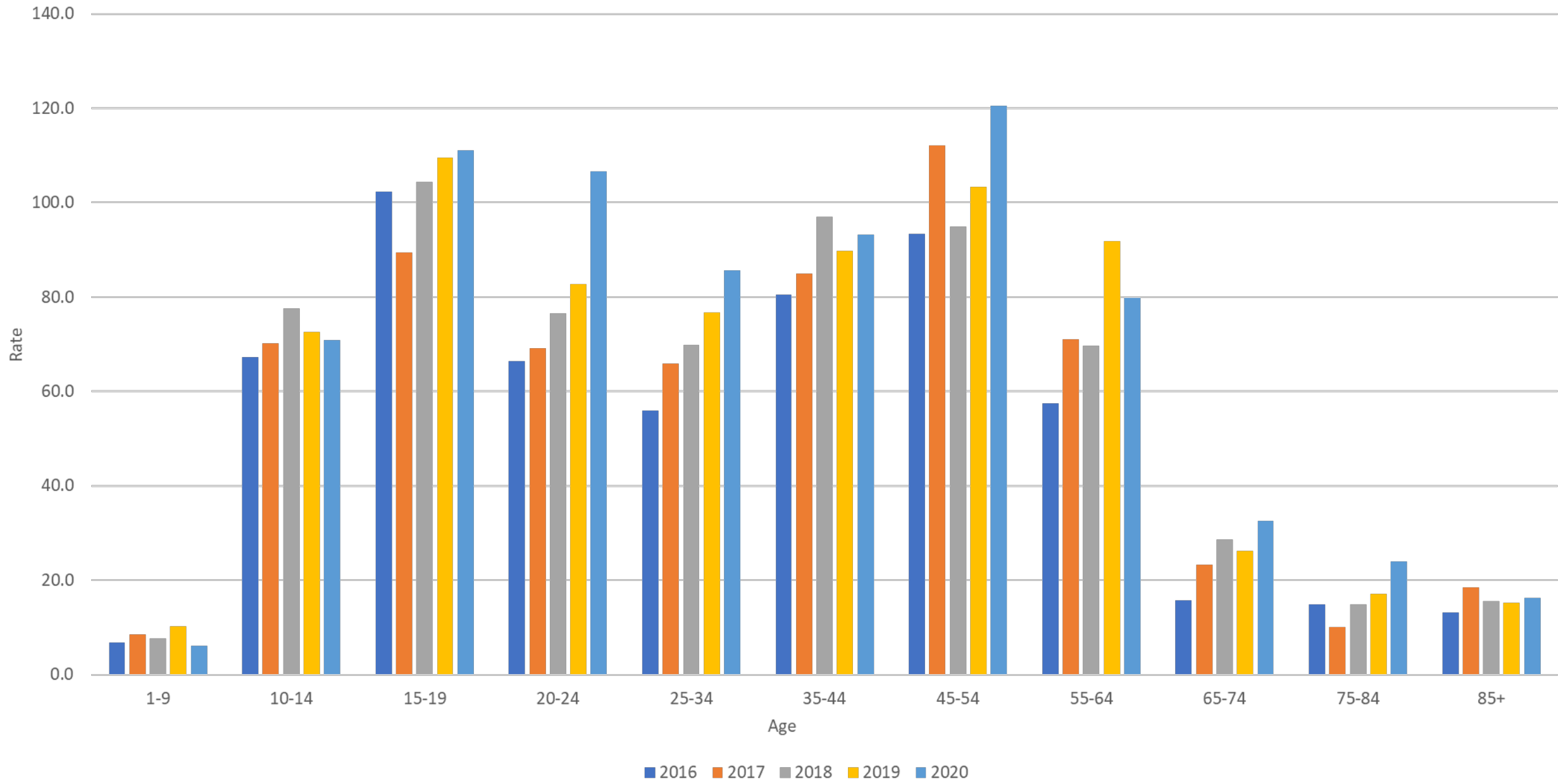
# Charleston County Suicidal Ideation 2016-2020



# Charleston County Suicidal Ideations by Sex 2016-2020

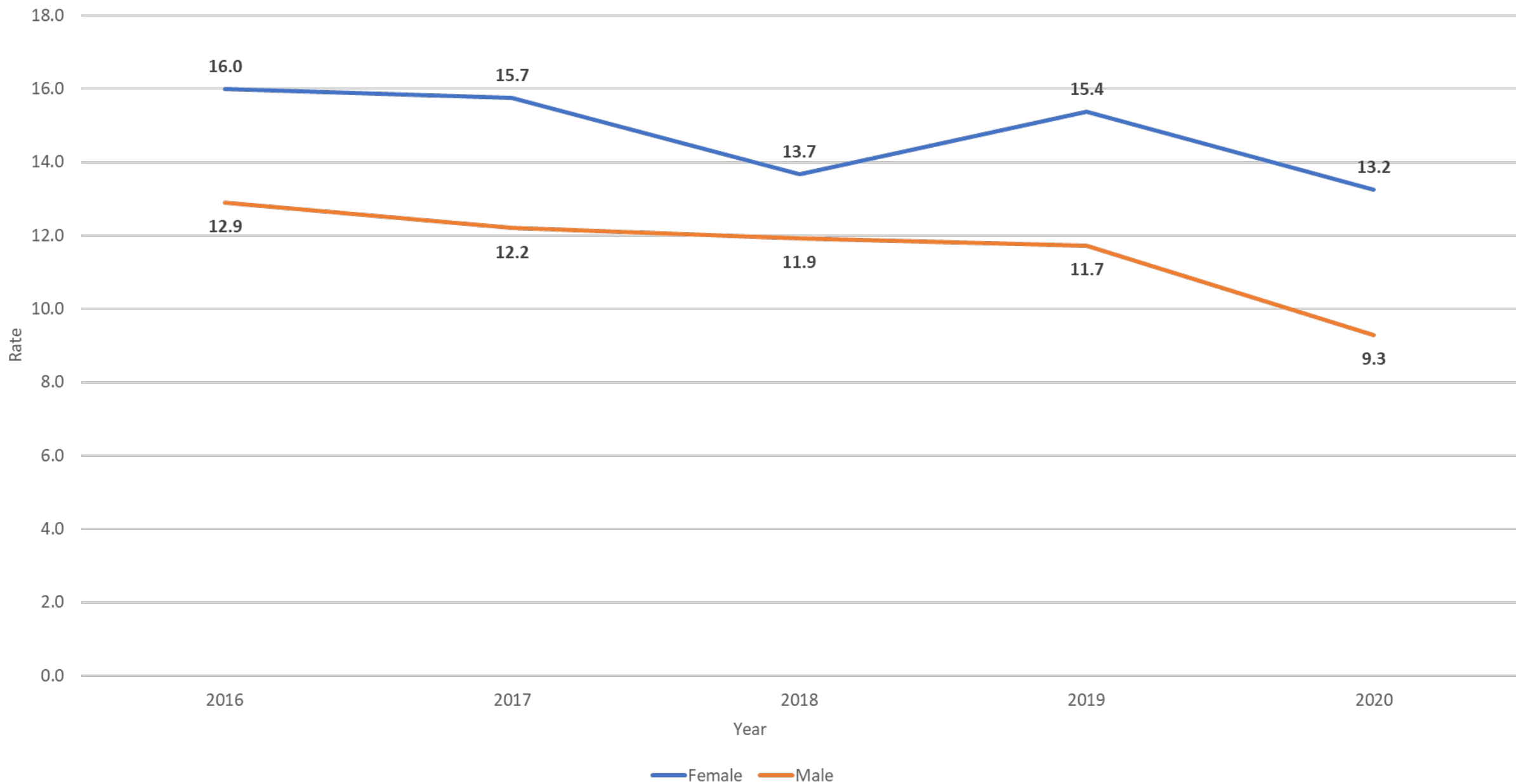


# Charleston County Suicidal Ideation by Age 2016-2020

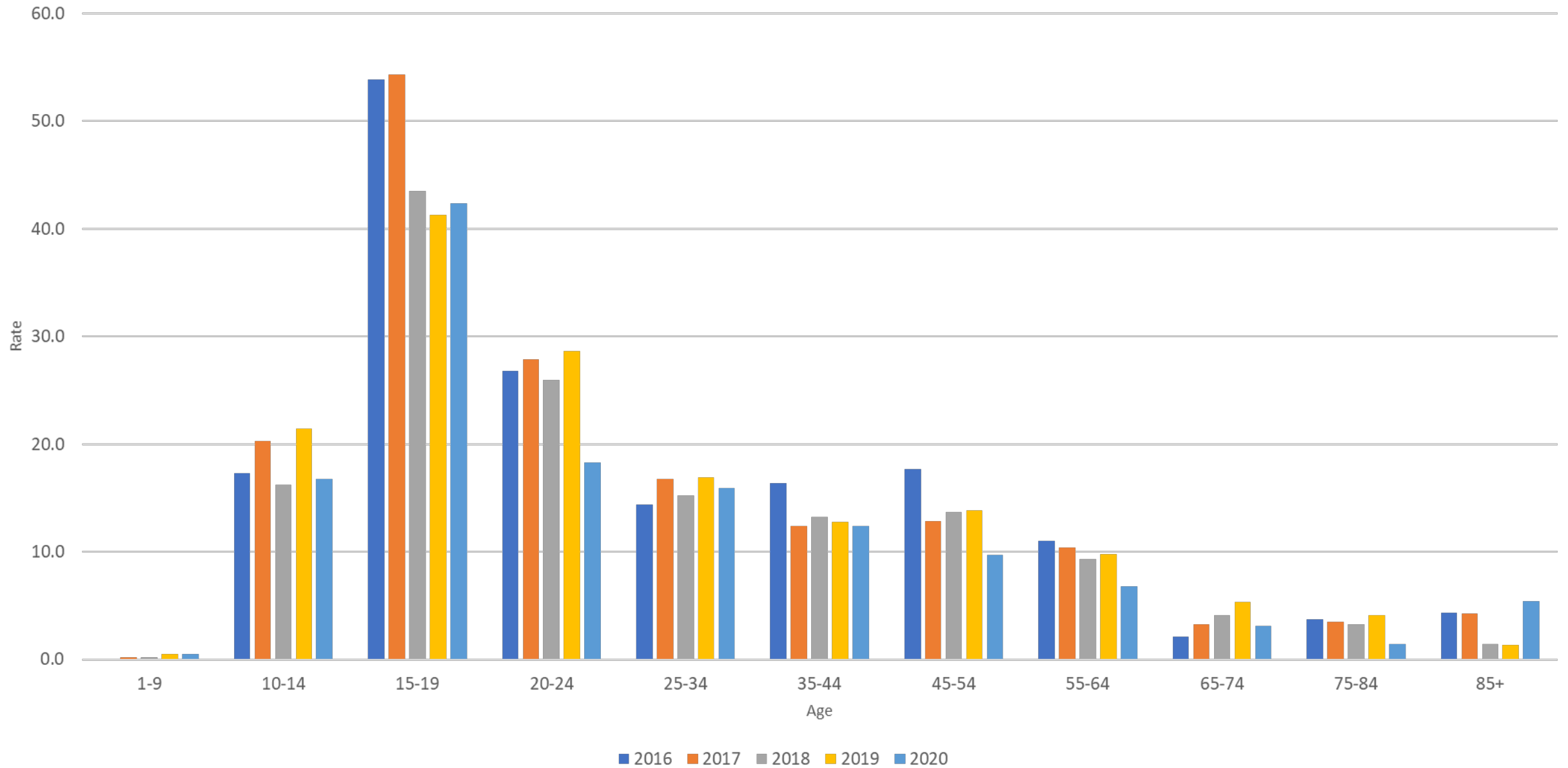




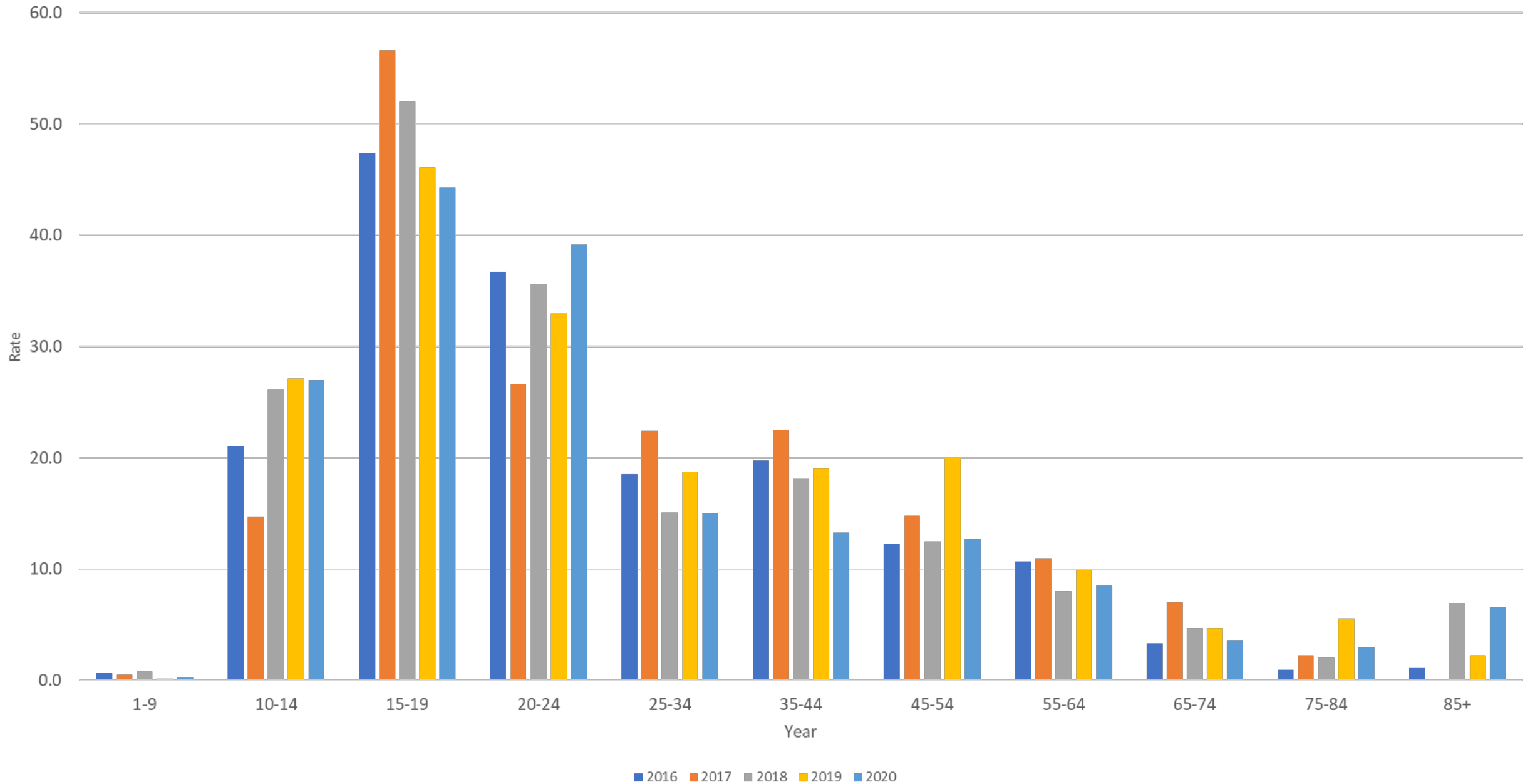
# Charleston County Suicide Attempts by Sex 2016-2020



# Charleston County Suicide Attempts by Age 2016-2020



# Greenville County Suicide Attempts by Age 2016-2020



# “IN A ZERO SUICIDE APPROACH:

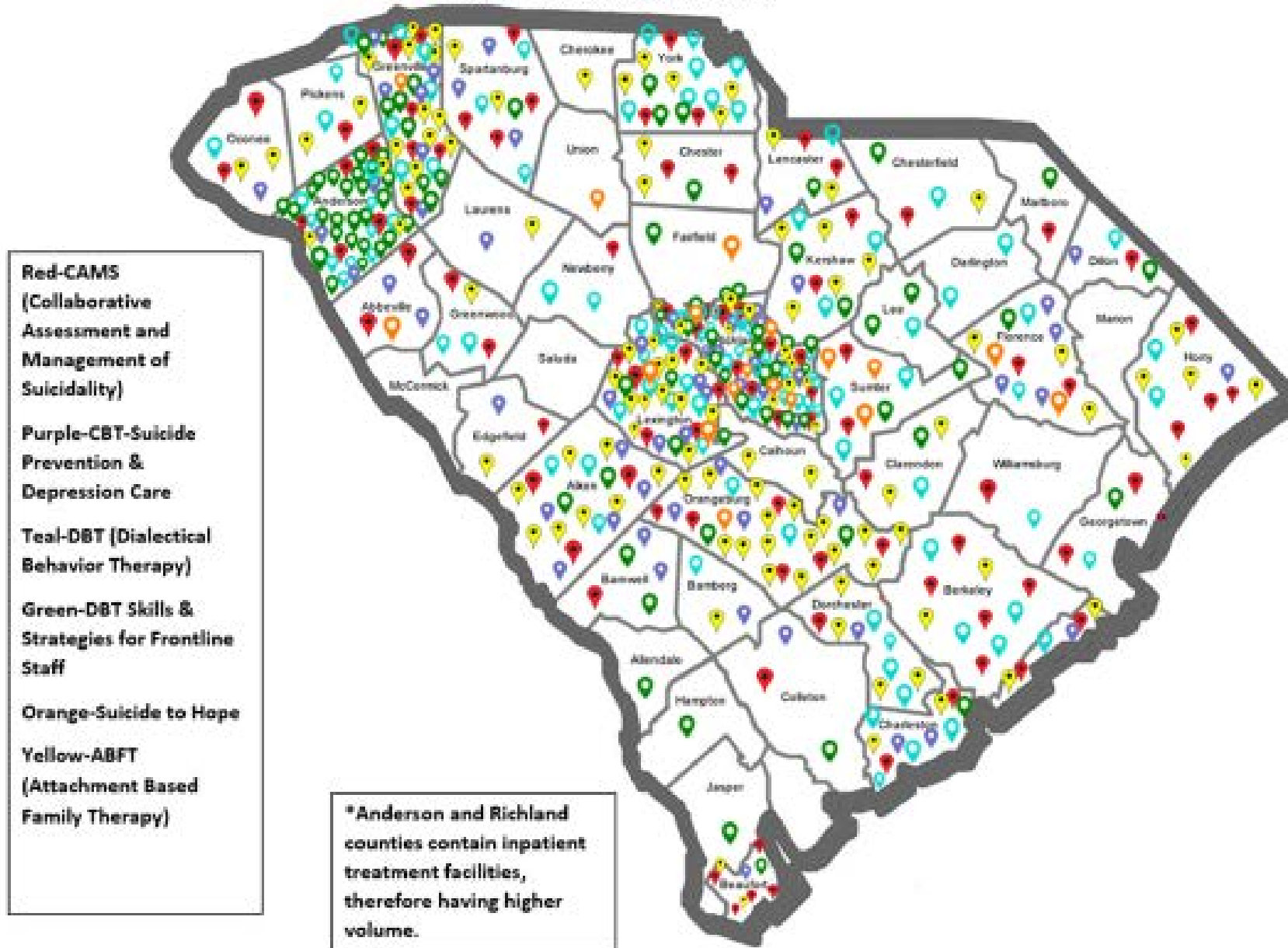
All clients with suicide risk, regardless of setting, receive evidence-based treatment to address suicidal thoughts and behaviors directly, in addition to treatment for other mental health issues.

Clients with suicide risk are treated in the least restrictive setting possible.”

<https://zerosuicide.edc.org/toolkit/treat>



## DMH Treatment Providers



## Suicide Bereavement Clinician Training



[illegible]

## Suicide Bereavement Clinician Training



<https://Hope.ConnectsYou.org>



# SC Mobile Crisis and Telehealth

Mobile Crisis Telehealth is available in the following Counties:

- Barnwell
- Laurens
- Newberry
- Saluda
- Edgefield
- McCormick
- Greenwood
- Abbeville
- Lexington
- Clarendon
- Charleston

**1.833.364.2274**



- Created in 2018, the SCDMH Mobile Crisis program provides 24/7/365 crisis response in all 46 counties of South Carolina.
- Staffed by more than 200 masters level clinicians statewide, our team responds to crisis at the mental health centers, in the community, via telephone or telehealth.
- We collaborate with local helping agencies to divert persons in crisis from emergency departments, inpatient facilities and detention centers.
- In 2020, we received more than 15,000 crisis calls, conducted more than 2,400 mobile responses and facilitated more than 2,500 diversions.
- 24/7/365 call 1.833.364.2274

# SC First Responder Support Team (FRST)



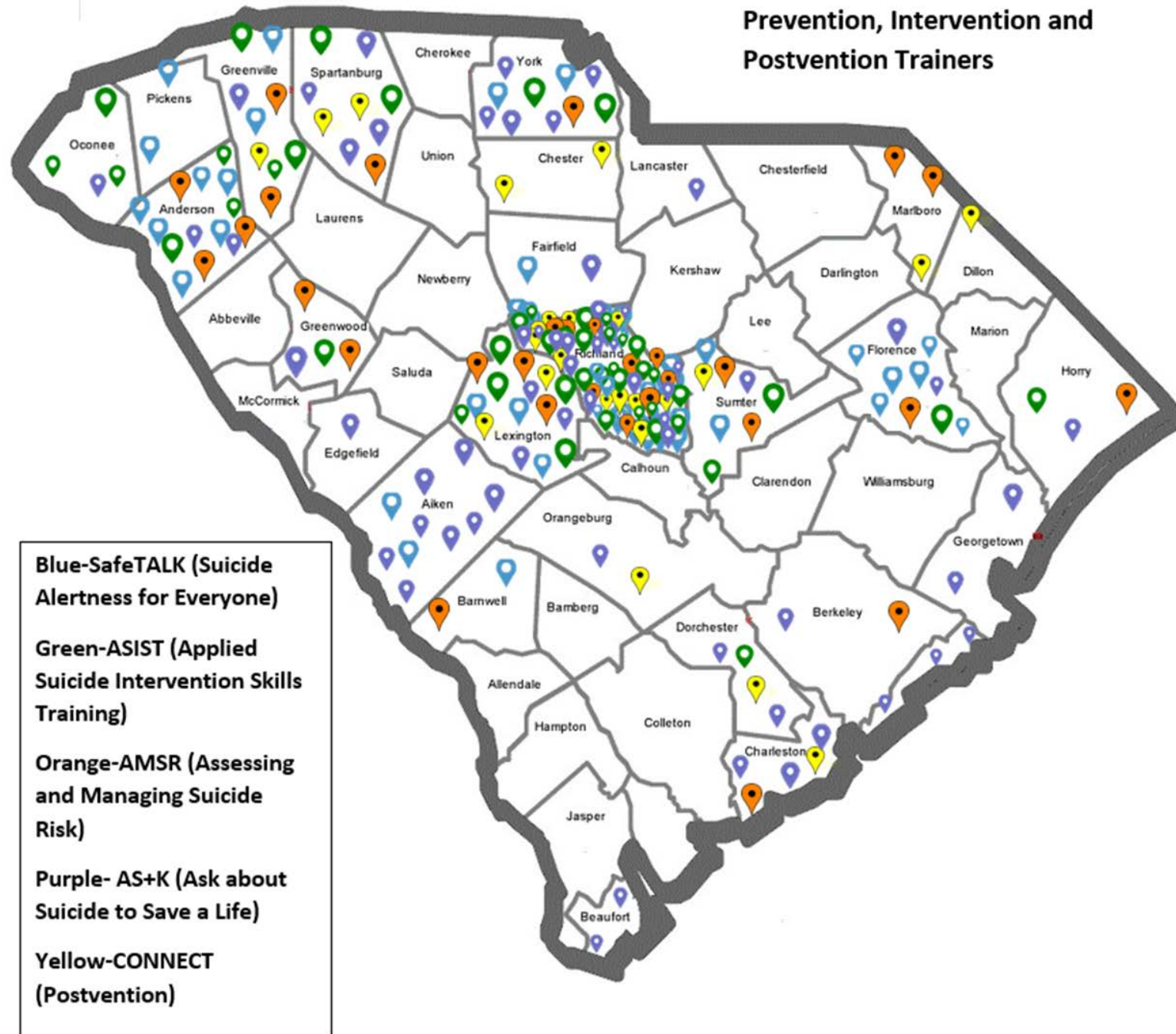
1-833-364-3778

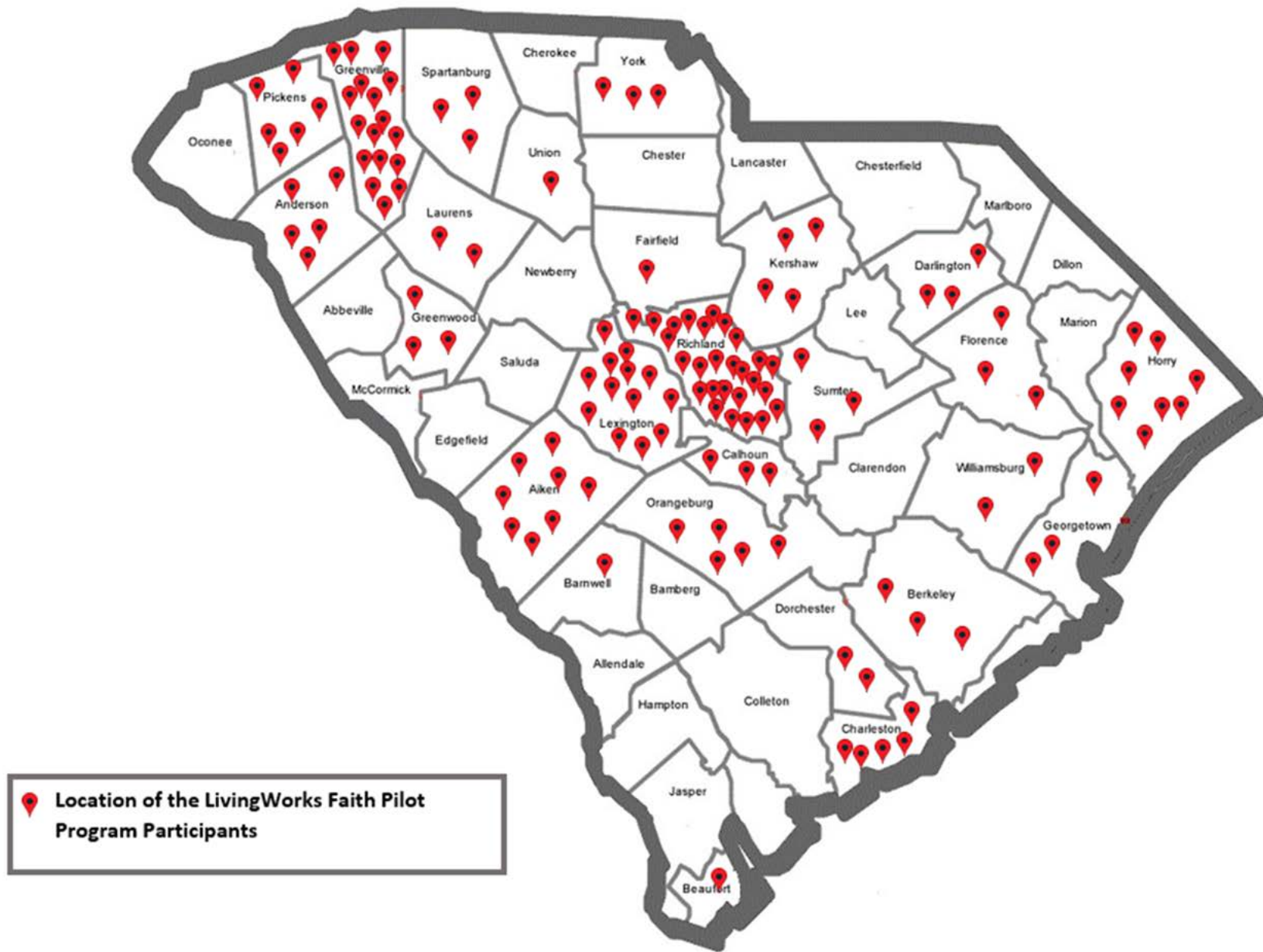


- FRST services are available statewide to first responders and their families
- Individual and family therapy
- Eye Movement Desensitization and Reprocessing (in-person only)
- Telehealth available from 8am-8pm, Monday-Friday, by appointment



## Prevention, Intervention and Postvention Trainers







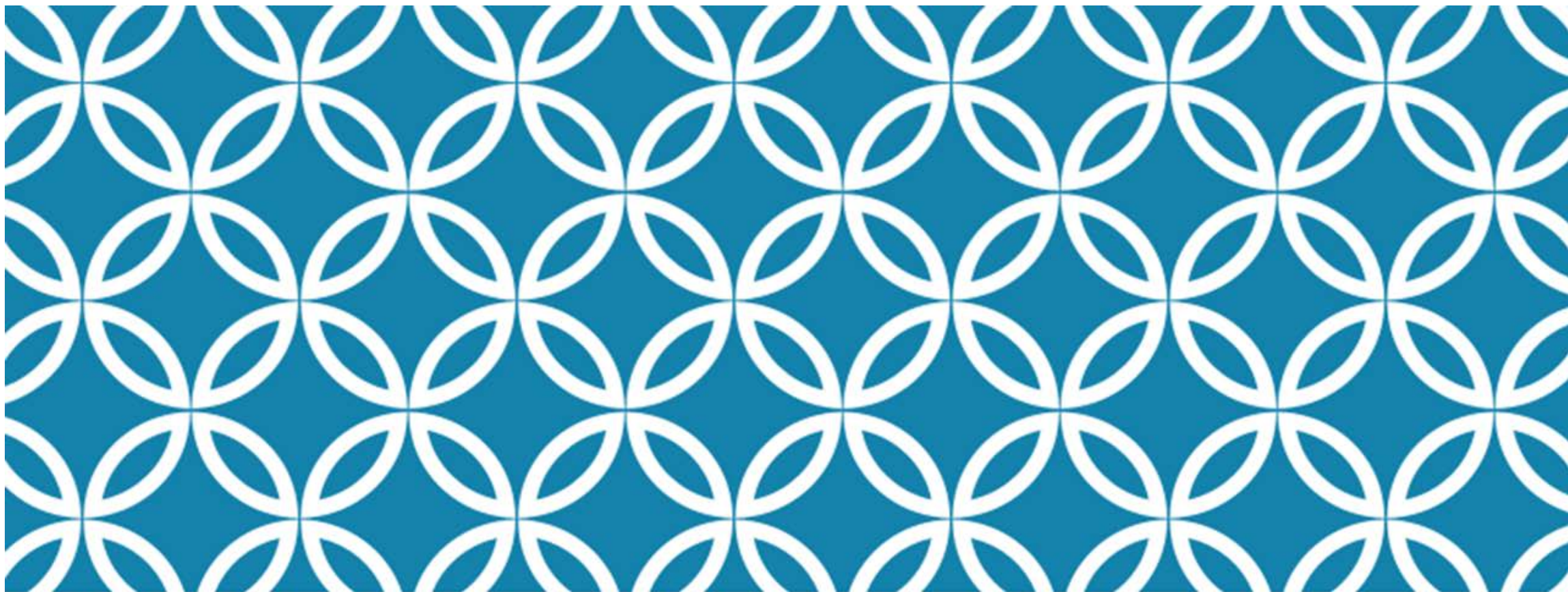


*“Addressing suicide in our faith-based communities,  
promoting hope and abundant life for all.”*

Pastor Greg Van Dyke [pastor.greg@pastorngv.com](mailto:pastor.greg@pastorngv.com)

**GO TO MENTI.COM AND ENTER THE CODE  
1157 5520 TO ANSWER THE QUESTION**





**South Carolina Communities of Care**



# SUICIDE PREVENTION: THINK COMPREHENSIVELY

- Suicide is complex!
- There is no single cause for suicide, and suicide risk differs across individuals.
- Addressing a complex issue requires an equally complex and comprehensive response.
- Research indicates that bundles of suicide prevention activities done together have the best chance of impacting suicide risk and behaviors.





# What is the SC Communities of Care Project?



# Communities of Care Project Goals

## Decrease Suicidal thinking and Behaviors Through

Increased capacity and training for suicide prevention

- Earlier identification of suicide risk
- Earlier intervention and treatment
- Increase follow-up and coordination

Developing Trauma-Informed Schools, Government Agencies, and Community Partners

- Decrease impact of trauma
- Earlier identification and intervention for trauma
- Mitigate and decrease short- and long- term impacts of trauma

# Trauma and Suicide Risk



- Persons impacted by trauma are at greater risk for suicidal thinking and behaviors
- Traumatic experiences during childhood, adolescence, and adulthood have been clearly linked to increased risk for the full range of mental health struggles including suicide
- Adverse childhood experiences
  - Shown to be at greater risk for suicidal ideation and attempts in adulthood

Initially focusing on 10 priority counties with the highest number of suicide deaths:

**Aiken**

**Anderson**

**Berkeley**

**Charleston**

**Greenville**

**Horry**

**Lexington**

**Richland**

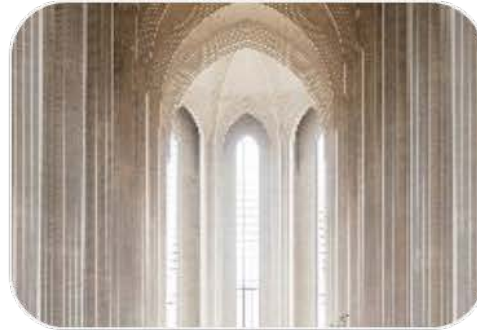
**Spartanburg**

**York**

# Communities of Care: Key Partners



**Trauma-Informed  
Suicide Prevention**



**Faith-Based  
Organizations**



**Community  
Partners**



**Persons with Lived  
Experience**



**Zero Suicide  
Champions**



**Government and  
public sector  
agencies**



**Schools**

## ADDITIONAL SC SUICIDE PREVENTION APPROACHES:

- ❖ SC participated in the 2020 VA/SAMHSA Governor's Challenge to Prevent Suicide among Service Members, Veterans, and their Families and continues this work today
- ❖ Pickens Co. selected for SAMHSA's 2021 Crisis Intercept Mapping Cohort
- ❖ LivingWorks *Start* training for veteran county offices across the state, several state agencies, first responder agencies, etc.
- ❖ SC Hospital Association launched the inaugural Drive to Zero Suicide award this year to support and honor excellence in our healthcare systems across the state
- ❖ *SafeSide Prevention* training for Primary Care Settings
- ❖ *SafeSide Prevention* training for Youth Services
- ❖ Funding provided to MHAGC to increase call capacity and reach for the National Suicide Prevention Lifeline
- ❖ SC partnered with the national Crisis Text Line to have its own code "Hope4SC"









What Do We Need From You?

Get Involved &  
Spread the Word!  
**Hope lives in  
South Carolina!**



# GET INVOLVED!

Jennifer Butler, LISW-CP/S

SC Department of Mental Health

Office of Suicide Prevention

[Jennifer.Butler@scdmh.org](mailto:Jennifer.Butler@scdmh.org)

[OSP@scdmh.org](mailto:OSP@scdmh.org)

1-803-896-4740

