



# Sheriff Al Cannon Detention Center Reentry Services

WILLIAM MALCOLM, LISW-CP  
DIRECTOR OF MENTAL HEALTH  
CHARLESTON COUNTY SHERIFF'S OFFICE





# Sheriff Al Cannon Detention Center

In 2022,  
were  
released

In 2024,  
have  
10,602  
cases.







# What is Reentry?

The process of reintegration back into society after jail detention or incarceration.

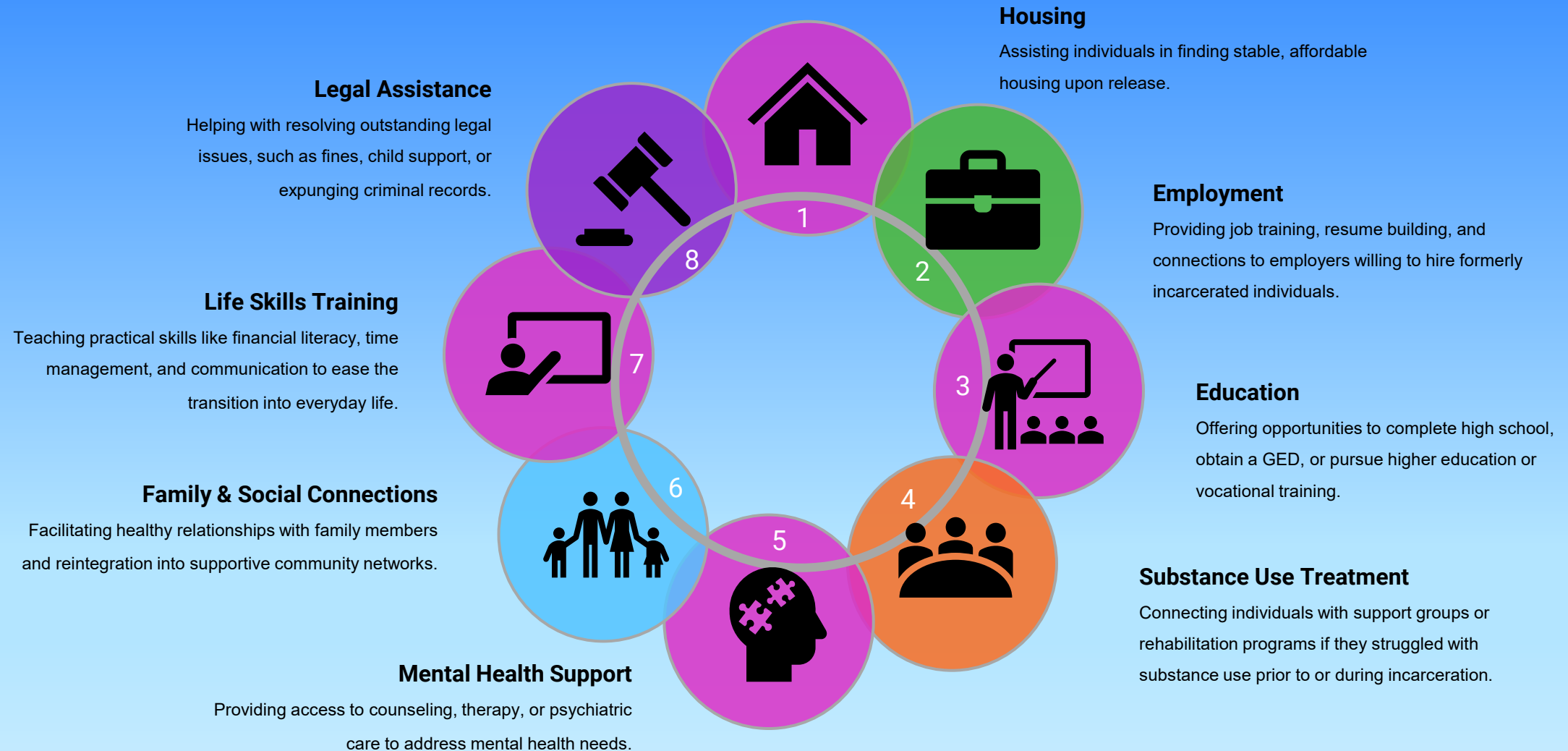
Reentry is important for public safety because it can help break the cycle of reoffending and re-incarceration.

Jail presents a problem because we often do not have time or resources to assist everyone in the detention center.

We focus on individuals with high needs. These are the individuals who cycle in and out of jail multiple times per year.



# Most Commonly Identified Needs for Successful Reentry







# Specific Assistance we provide in SACDC

## Psychoeducational groups

- Thinking for a Change (T4C)
- Financial Peace
- Cognitive Behavioral Therapy Groups

## Identification and benefits

- Social security cards
- Birth certificates (SC only)
- Medicaid & Medicare
- SSI/SSDI

## Referrals to community resources

- Housing programs
- Residential SUD programs throughout the state
- Transportation
- Job training programs






# Specific Reentry Projects at SACDC

Most Visible Persons (MVP) Workgroup –  
monthly multidisciplinary case conference  
to discuss individuals with 4 or more  
bookings

Just Home Project –  
grant funded housing program for  
individuals exiting SACDC

Vulnerable Resident Advocate – will focus  
on elderly individuals in our jail who have  
complex medical and social needs





# Reminder....Jail is not the place for treatment

It is estimated that more than 63% of individuals in jail have substance use disorder, but...

Jail is not designed for substance use treatment – best practices cannot be followed due to the nature of a jail setting.

Overdose death due to opioids is 50 times greater than the general population in the two weeks following release



# Questions or Comments

## CONTACT INFORMATION:

WILLIAM MALCOLM, LISW-CP

[WMALCOLM@CHARLESTONCOUNTY.ORG](mailto:WMALCOLM@CHARLESTONCOUNTY.ORG)

*CELL* (843) 408-6253

*OFFICE* (843) 529-7404

*FAX* (843) 529-7466