



Navigating Research Funding Opportunities

Wanda Pierce

Office of Research Development

Sponsor Types

- Federal
 - NIH, DOD, NSF
- Foundations
 - PCORI, Ford Foundation & AHA
- Corporate & Industry
 - Pfizer & GE Healthcare





Federal Funds

NIH invests more than \$47 billion a year in research

National Institutes of Health (NIH)- Grants & Funding



About Grants

- An orientation to NIH funding, grant programs, how the grants process works, and how to apply.



Find Funding

- NIH offers funding for many types of grants, contracts, and programs.



How to Apply

- Instructions for submitting a grant application to NIH and other Public Health Service agencies.

Source: <https://www.nih.gov/grants-funding>

NIH Research Training & Career Development

Select your educational or career level to find a funding opportunity to support your training or career development goals



Undergraduate and Postbaccalaureate Education

Predocotoral Training/
Clinical Doctorate

Postdoctoral Training/
Clinical Residency

Early Research Career
Development

Established
Investigator Research
Development and
Mentoring

EDUCATION AND TRAINING

CAREER

Source: <https://researchtraining.nih.gov/>

NIH Funding Search Tool

- The [NIH Guide for Grants and Contracts](#) is our official publication for NIH grant policies, guidelines and funding opportunities. They publish daily and issue a table of contents weekly.
- [Subscribe to receive updates.](#)

The screenshot displays the NIH Funding Search Tool interface. At the top, there are tabs for 'Funding Opportunities' and 'Other Notices'. On the right, there are links for 'Export Results', 'Share Results', and 'Save Results'. Below these are filter options: 'Active Opportunities' (checked), 'Expired Opportunities', and 'Include Notices of Special Interest (NOSIs)' (checked). There are three main filter sections: 'Funding Category' with a dropdown menu and a link to 'Learn more about Funding Categories'; 'Funding Organization(s)' with a dropdown menu and an option for 'Issuing Organization Only'; and 'Keyword' with a search box and a 'Title Only' checkbox. Below these filters are buttons for 'Advanced Search' and 'Clear Filters'. There are also buttons for 'Active Opportunities' and 'Include NOSIs'. The interface shows 'Displaying: 1-20 of 1,322' results. At the bottom right, there are buttons for 'Table View' and 'Detailed View'. The main content is a table with the following data:

Title	Notice Number	Issuing Organization	Participating Organization(s)	Release Date	Expiration Date	Activity Codes
Early Psychosis Intervention Network (EPINET): Learning Health Care Research to Improve Mental Health Services and Outcomes (P01 Clinical Trial Optional)	RFA-MH-25-200	NIMH	N/A	September 23, 2024	February 3, 2025	P01
Discovery and Development of Novel Therapeutics for Select Fungal Pathogens (R21/R33 Clinical Trial Not Allowed)	RFA-AI-24-065	NIAID	N/A	September 23, 2024	January 28, 2025	R21/R33
Notice of Special Interest (NOSI): Quantum Sensing in Biomedical Applications (SBIR/STTR)	NOT-EY-24-014	NEI	NCATS, NCI, NHLBI, NIBIB	September 20, 2024	January 26, 2027	R43/R44, R41/R42
Mechanism for Time-Sensitive Substance Use Research (R21 Clinical Trial Optional)	PAR-24-298	NIDA	N/A	September 20, 2024	September 9, 2027	R21
HEAL Initiative: Studies to Enable Analgesic Discovery (R61/R33 - Clinical Trial Not Allowed)	RFA-NS-25-023	NINDS	NCCIH, NCI, NEI, NIA, NIAAA, NIAMS, NICHD, NIDCR, NIDDK	September 18, 2024	January 15, 2027	R61/R33

DOD Congressionally Directed Medical Research Programs (CDMRP)

- Originated in 1992 via an appropriation to foster novel approaches to biomedical research for the American public, the military, and Congress.
- Funding the full pipeline of research development, including basic, translational, and clinical research.
- Reviewing application using a two-tier formal review with no standing peer review panels and no "pay line"
- Supporting both the next generation of researchers and established scientists.
- [Funding Opportunities](#) most open in the spring
- [Webinar Series Strategies to Increase the Success of Applications](#)



CDMRP Research Focus Areas

Alcohol and Substance Abuse	Amyotrophic Lateral Sclerosis	Autism	Bone Marrow Failure	Breast Cancer	Duchenne Muscular Dystrophy
Epilepsy	Lung Cancer	Military Burn	Multiple Sclerosis	Neurofibromatosis	Parkinson's
Orthotics and Prosthetics Outcomes	Ovarian Cancer	Peer Reviewed Alzheimer's	Peer Reviewed Cancer	Peer Reviewed Medical	Peer Reviewed Orthopaedic
Prostate Cancer	Psychological Health/Traumatic Brain Injury	Reconstructive Transplant Research	Spinal Cord Injury	Tuberous Sclerosis Complex	Vision

Source: <https://research.musc.edu/resources/ord/funding-portal/cdmrp>



Health Resources & Services Administration (HRSA)

- HRSA is the primary Federal agency for improving health care to people who are geographically isolated, economically or medically vulnerable.
- Research Focus
 - Primary Health Care/Health Centers
 - Ryan White HIV/AIDS Program
 - Health Workforce
 - Maternal and Child Health
 - Healthcare Systems
 - Organ Donation & Transplantation
- [Apply for](#) a HRSA Grant

National Science Foundation (NSF)

- NSF funds cutting-edge ideas, receives 40,000 proposals annually and awards about \$12,000 new awards
- Program Officers are the key to success
- Watch the NSF Workshop [Video](#) – MUSC-hosted
- MUSC-NSF [Guide](#) provides
 - strategies for success
 - links to current funding opportunities
 - tips for submission
 - resources that you can investigate and explore as prospective funding options



Early Career Funding Opportunities

- Early Career programs are intended for advanced postdoctoral fellows and early-career faculty, usually those at the rank of assistant professor.
- Federal Agencies
- Foundations and Community Organizations

Source: <https://research.musc.edu/resources/ord/funding-portal/early-career>



Foundation Funding



NATIONAL PRIORITIES FOR HEALTH

PCORI

The Patient-Centered Outcomes Research Institute ([PCORI](#)), an independent nonprofit, nongovernmental organization, funds patient-centered comparative clinical effectiveness research (CER).

PCORI also funds projects that support CER, such as methodology studies, as well as projects that support engagement in research and dissemination and implementation of PCORI-funded research findings.

Use the search/filters below to find available funding opportunities and take advantage of the following resources:

- [What & Who We Fund](#)
- [What You Need to Know to Apply](#)
- [Standard Due Dates for 2025 Funding Announcement Cycles](#)

PCORI's Mission and What They Fund?

Research Focus

- **Comparative Clinical Effectiveness Research (CER)**
 - Studies that [compare outcomes to determine the effectiveness](#), including risks and benefits, of two or more approaches to health care
- **CER Methods and Infrastructure**
 - Studies to [improve the methods](#) available for patient-centered CER
 - Development of a large, highly representative electronic-data infrastructure, [called PCORnet](#), for improving the conduct of patient-centered CER

Conditions Studied

- Conditions that affect large numbers of people across a range of populations
- Conditions that place a heavy burden on individuals, families, specific populations, and society
- Rare diseases, which are difficult to study

Populations of Interest

- Racial and ethnic minorities
- Older adults
- Low-income & residents in rural areas
- Women & Children
- [And many more](#)

Philanthropy News Digest (PND)

- PND Bulletin
- A roundup of recently announced Requests for Proposals (RFPs) from private, corporate, and government funding sources.
- [Get RFP Alerts](#)

PND PHILANTHROPY NEWS DIGEST A service of the FOUNDATION CENTER

Search PND...

News RFPs Jobs Features Blog Classifieds

ME > RFPs

RFPs

Philanthropy News Digest publishes RFPs and notices of awards as a free service for grant-making organizations and nonprofits. To have your RFP considered for publication, please email pndrfp@foundationcenter.org with a word document, text-only file, or link to a Web site explaining the program scope, grantee qualifications, application instructions, and deadlines. We require notice of funding opportunities five weeks in advance of their deadlines.

NEW RFPs

TS / CULTURE

Luce Foundation Accepting Applications for Luce Foundation Dissertation Fellowships American Art

STED: SEPTEMBER 14, 2016
ADLINE: OCTOBER 26, 2016

1 one-year fellowships will provide stipends of \$30,000 to graduate students working a dissertation related to the history of the visual arts in the United States....

Smithsonian Charitable Foundation Invites Applications to Mid-Career Professionals in Preservation and Architecture

STED: SEPTEMBER 14, 2016
ADLINE: OCTOBER 26, 2016

PND NEWSLETTERS AND ALERTS

Enter your e-mail address

SEARCH RFPs

Subject:

Keyword:

UPCOMING DEADLINES

Conquer Cancer Foundation Accepting Applications for Annual Career Development Award

MEDICAL RESEARCH
Deadline: September 22, 2016



Clinical Research

MUSC Office of Clinical Research Services & Support

- Research Opportunities & Collaborations (ROC)
- Prospective Reimbursement Analysis (PRA) & Institutional Requirements Review (IRR)
- Corporate Budgeting & Negotiations
- ClinicalTrials.gov
- OnCore CTMS & eReg
- ClinCard
- Industry Sponsor Invoicing
- Metrics, Reporting, & Training



ROC Clinical Research Liaisons

ResearchOppCollab@musc.edu



Signe Denmark, MS, CCRP

Associate Director, Research Opportunities & Collaborations, OCR Finance

843.792.4146

denmarks@musc.edu

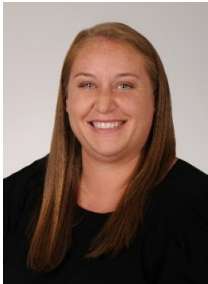


Kristen Clasen DeHart, M.Ed.

Program Manager, Trial Innovation Network, Research Opportunities & Collaborations

843.792.3131

clasen@musc.edu



Heather Hopmeier, BS, CMA

Program Coordinator, Research Opportunities & Collaborations

843.792.4457

hopmeier@musc.edu



Grant Forward

Web-based resource, paid database system

Grant Forward

Grant Forward is a funding opportunity database where scientists can search for funding opportunities from federal, state, foundation, and corporate sponsors.

The screenshot displays the GrantForward website interface. At the top, a navigation bar includes links for Grants, Sponsors, Researchers, Administrator Console, and Support. Below this is a yellow banner with the text "Welcome to GrantForward" and "You are using GrantForward as a member of Medical University of South Carolina." A search bar with the placeholder "Keywords to find grants..." and a "Search" button is present, along with an "Advanced Search" dropdown. The main content area features a sidebar with navigation options: "New Recommended Grants", "Favorite Grants", and "Save Searches Updates". The main panel shows a list of 10 recommended grants with columns for Grant, Deadline, Amount, and Favorites. The grants listed are:

Grant	Deadline	Amount	Favorites
Roswell Park Cancer Institute Gynecologic Oncology Fellowship Program Roswell Park Cancer Institute Roswell Park	Mar 31, 2017	See Detail	☆
The BrickStreet Foundation Grant Brickstreet Foundation, Inc.	Mar 31, 2017	See Detail	☆
Northrop-Park Fellowship Firland Foundation	Mar 31, 2017	See Detail	☆
Arts, Culture and Community Assets Grant The Daniel Foundation of Alabama	Mar 31, 2017	See Detail	☆
Charles H. Hood Foundation Child Health Research Awards Program Medical Foundation Division Health Resources in Action 1 more sponsor	Mar 29, 2017	To \$150,000	☆
American Thoracic Society (ATS) Fellowship in Health Equality	Apr 07, 2017	To \$25,000	☆

Identifying Funding Opportunities Using Grant Forward

Grant Forward Resources

- [Grant Forward](#)
- Grant Forward Researcher Welcome [Guide](#)
- Find Grants for a Specific Project and Share with Your Collaborators [video](#)

MUSC & NIH Resources

- [NIH Matchmaker](#)
- [Subscribe](#) to the Funding Focus newsletter

Questions

Wanda Pierce

Associate Director

Office of Research Development

[Email: piercewh@musc.edu](mailto:piercewh@musc.edu)



Office of Research Development (ORD)



Research



About Us

- The Office of Research Development (ORD) is a central research office reporting to the Vice President for Research. The ORD is committed to the success of our research faculty and trainees.
- Review this handout of the many resources and opportunities available to you as you plan your research career.
- To access all ORD resources, please visit <https://research.musc.edu/resources/ord>.



Funding Opportunities

- Explore external funding opportunities through Grant Forward, a comprehensive search engine.
- Access internal pilot project and career development programs.
- Stay informed about the latest funding opportunities and research policy updates through the *Funding Focus* newsletter.
- Gain insights into internal calls for limited submissions where sponsors restrict the number of applications MUSC can submit.
- Arrange one-on-one faculty funding consultations.



Faculty Development

- Engage with the Learning Initiative for Faculty in Training (LIFT) Academy, a multifaceted program supporting faculty applying for their first NIH Research Project (R01) grant.
- Participant in workshops and webinars.
- Utilize the Scientific Editing Service for a competitive edge.
- Understand the Governor's Award for Science.
- Stay informed through the Research Matters Blog.



Proposal Writing Support

- Review the Grant Writing Toolkit for general and specialized resources.
- Utilize the Proposal Library to gain insights from a range of successful MUSC applications.
- Gather information about the scientific facilities at MUSC to prepare the "Facilities & Other Resources" documents.
- Contact an expert for in research development for support in developing large-scale, multi-component proposals & training programs.
- Arrange one-on-one consultation for help in creating graphics for proposals.

Faculty Development

NIH R01 Learning Initiative for Faculty in Training (LIFT) Academy Supports faculty who are applying for their first NIH Research Project (R01) grant.

- **Group meetings and seminars** about grant writing and NIH and MUSC resources
- **Peer-group review and writing sessions** - LIFT Scholars review their colleagues' proposals and provide constructive feedback
- **LIFT Mentors** guide Scholars through the application development process, reviewing drafts and providing counsel
- **External review** of Scholar's final proposal before submission



Faculty Development



Research

Science Editors Network (SEN) makes proposals more competitive by:

- improving sentence structure, paragraph organization, and flow
- strengthening the scientific significance and impact
- enhancing scientific specificity
- identifying inconsistencies
- improving format and layout
- reducing word count and refining language

Proposal Writing Support

Proposal Library



Leverage the Proposal Library to draw insights from a variety of MUSC's successful applications.

Center & Training Grants



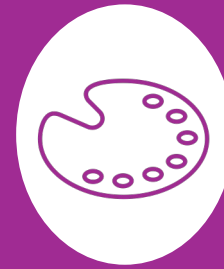
Contact a research development expert for support in developing large scale, multi-component proposals & training programs.

Grant Writing Toolkit



Review the Grant Writing Toolkit for general and specialized resources for R-series, K-series, and T32 submissions.

Graphics



Arrange one-on-one consultations for help in creating graphics for proposals.

Scientific Environment



Gather institutional information about MUSC's scientific environment to prepare "Facilities & Other Resources" documents.